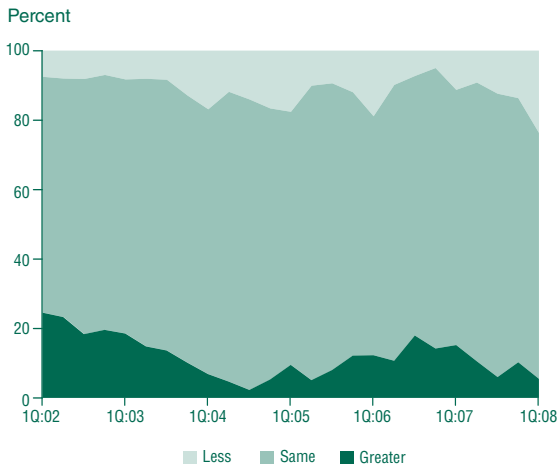


Agricultural Credit Conditions at Survey Banks in the Eleventh District

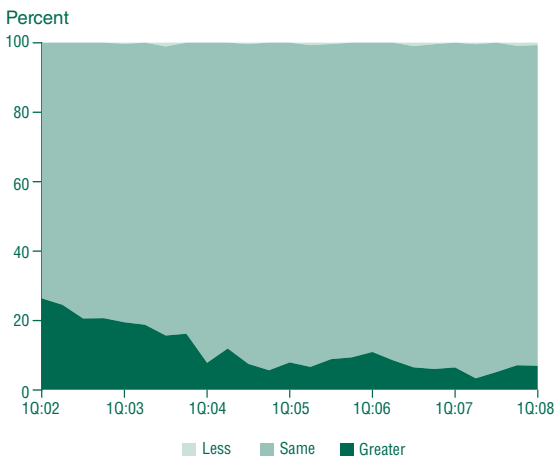
Renewals or Extensions of Loans

Twenty-four percent of reporters state that loan renewal and extension requests have declined.



Amount of Collateral

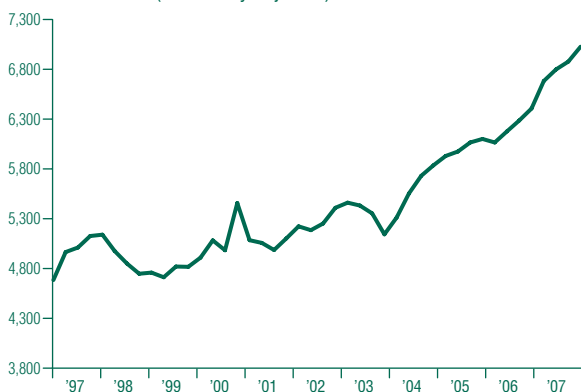
Ninety-two percent of bankers indicate no change in collateral levels.



Total Agricultural Loans

Agricultural loan volumes continued to rise at Eleventh District banks.

Millions of dollars (seasonally adjusted)



Loan-to-Deposit Ratios at Survey Banks

Average actual and desired ratios



Distribution of Loan-to-Deposit Ratios

	Banks Reporting (Percent)				
	2007			2008	
	Apr. 1	Jul. 1	Oct. 1	Jan. 1	Apr. 1
Less than 41%	22	17	17	18	24
41% to 50%	11	12	14	12	12
51% to 60%	20	13	17	17	18
61% to 70%	21	28	23	28	22
More than 70%	26	30	30	25	24

Interest Rate—Fixed

	Average Rate (Percent)				
	2007			2008	
	Apr. 1	Jul. 1	Oct. 1	Jan. 1	Apr. 1
Feeder cattle	9.44	9.39	9.35	8.91	7.78
Other farm operating	9.68	9.54	9.55	9.05	7.96
Intermediate term	9.27	9.13	9.24	8.66	7.74
Long-term farm real estate	8.55	8.52	8.49	7.92	7.24

Interest Rate—Variable

	Average Rate (Percent)				
	2007			2008	
	Apr. 1	Jul. 1	Oct. 1	Jan. 1	Apr. 1
Feeder cattle	9.35	9.42	9.22	8.67	7.20
Other farm operating	9.63	9.57	9.41	8.73	7.41
Intermediate term	9.37	9.14	9.23	8.48	7.32
Long-term farm real estate	8.85	8.66	8.61	7.93	6.66