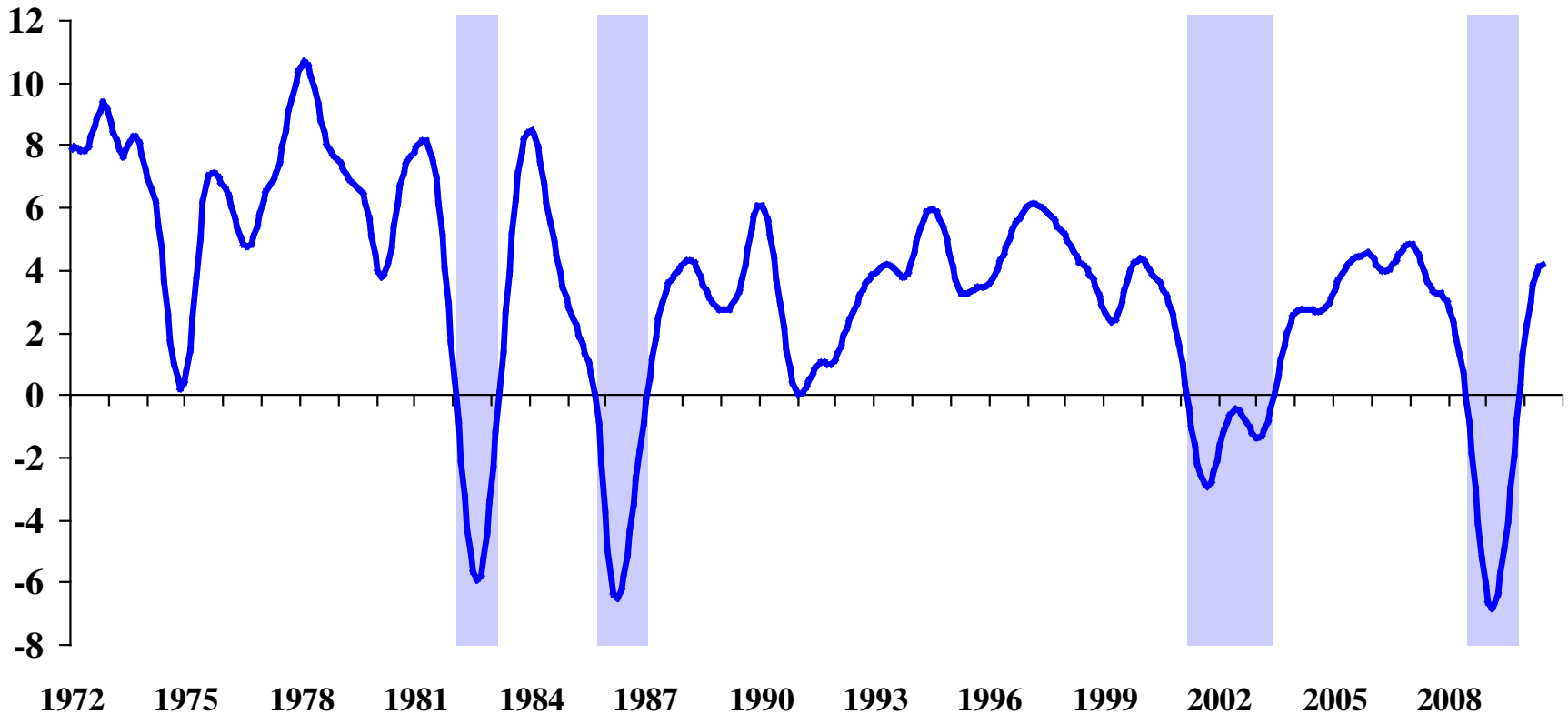




Texas Business-Cycle Index

Month/Month,
SAAR

TX recession
Index 1971=100 (Jul=4.21)

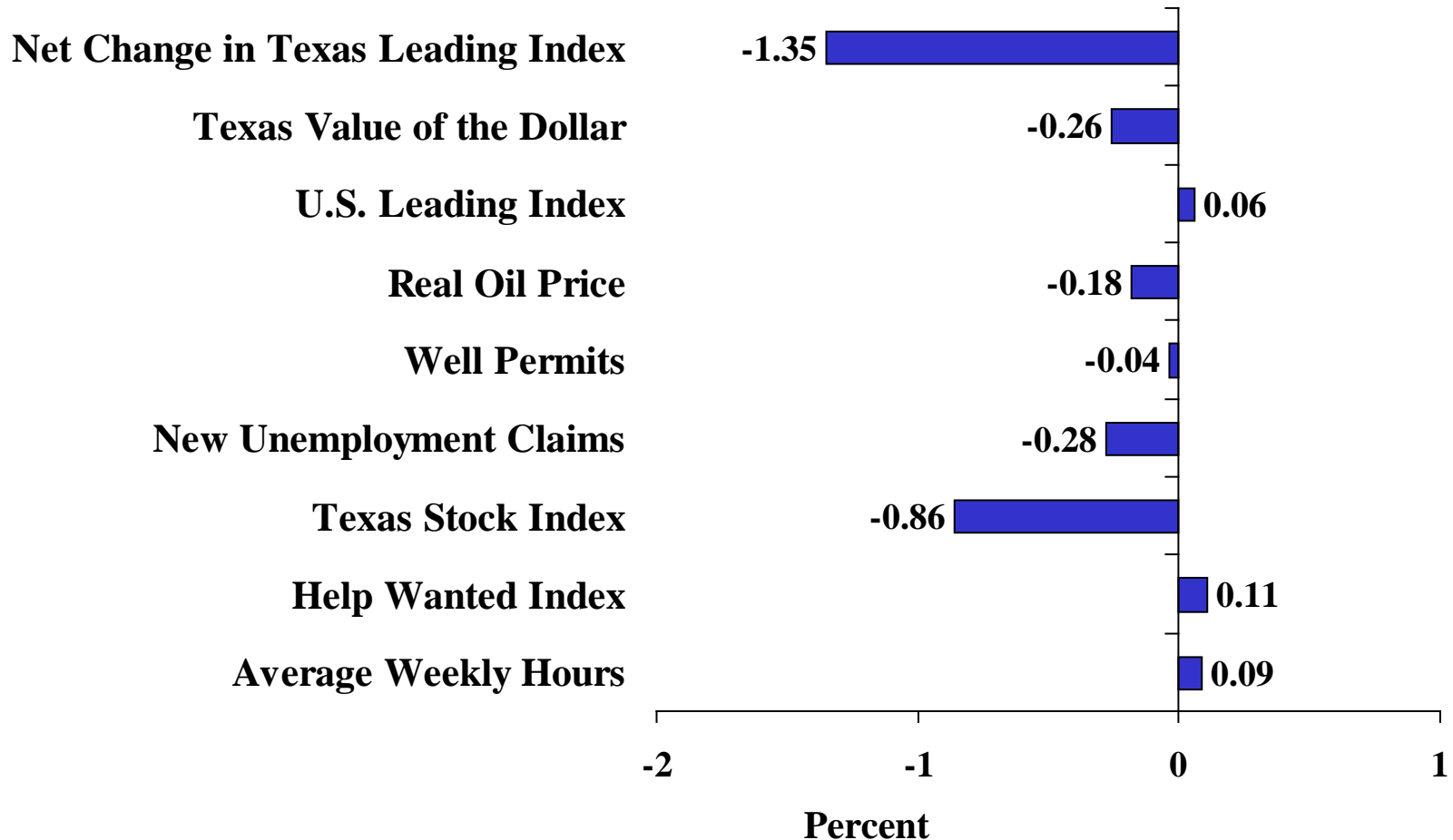




Change in Texas Leading Index

Net Contributions of Components

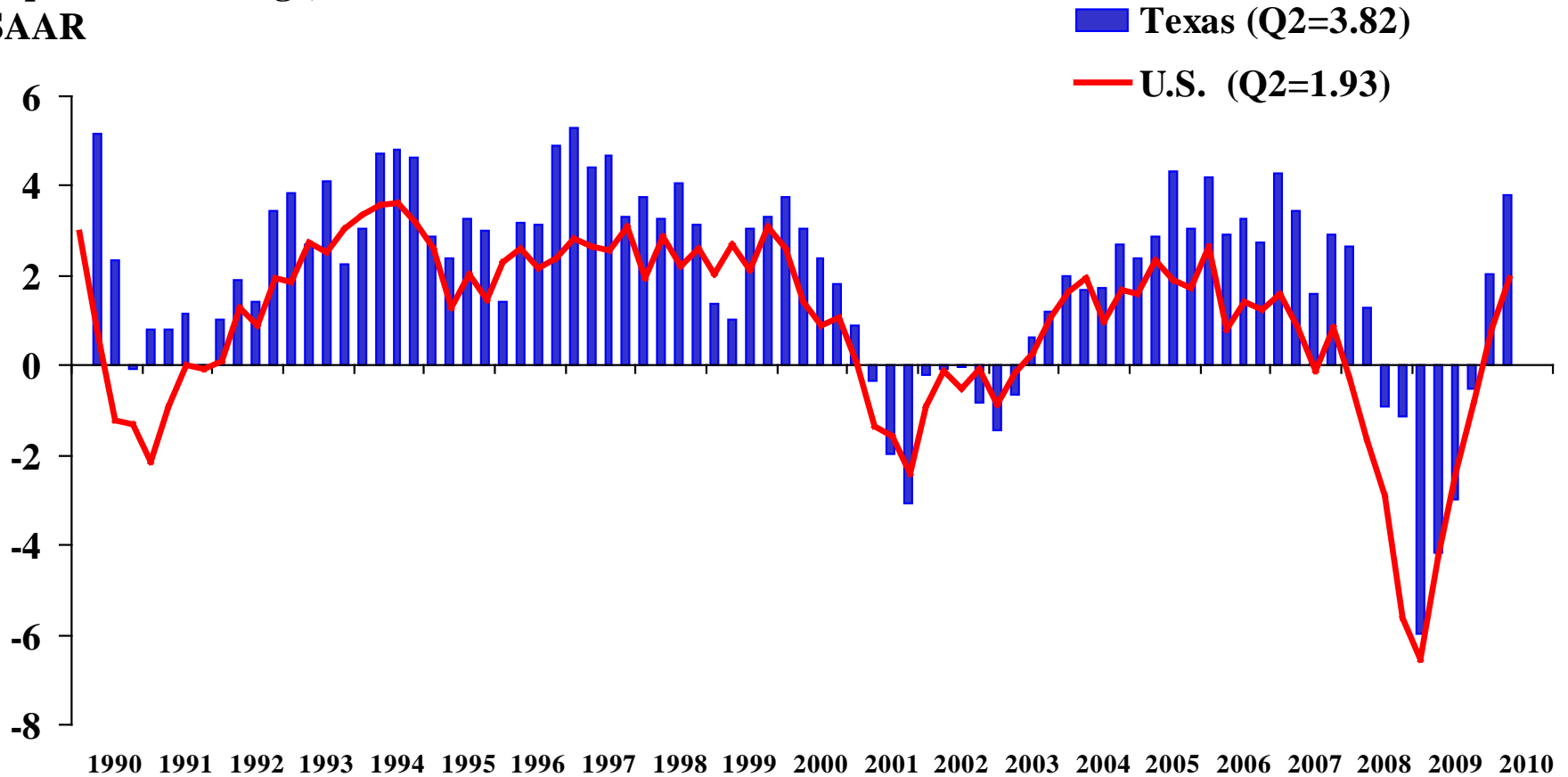
3-month change: April - May - June





Texas Total Nonfarm Employment Quarterly Growth

1-quarter % change,
SAAR



Source: BLS/TWC, seasonal and other adjustments by FRB Dallas

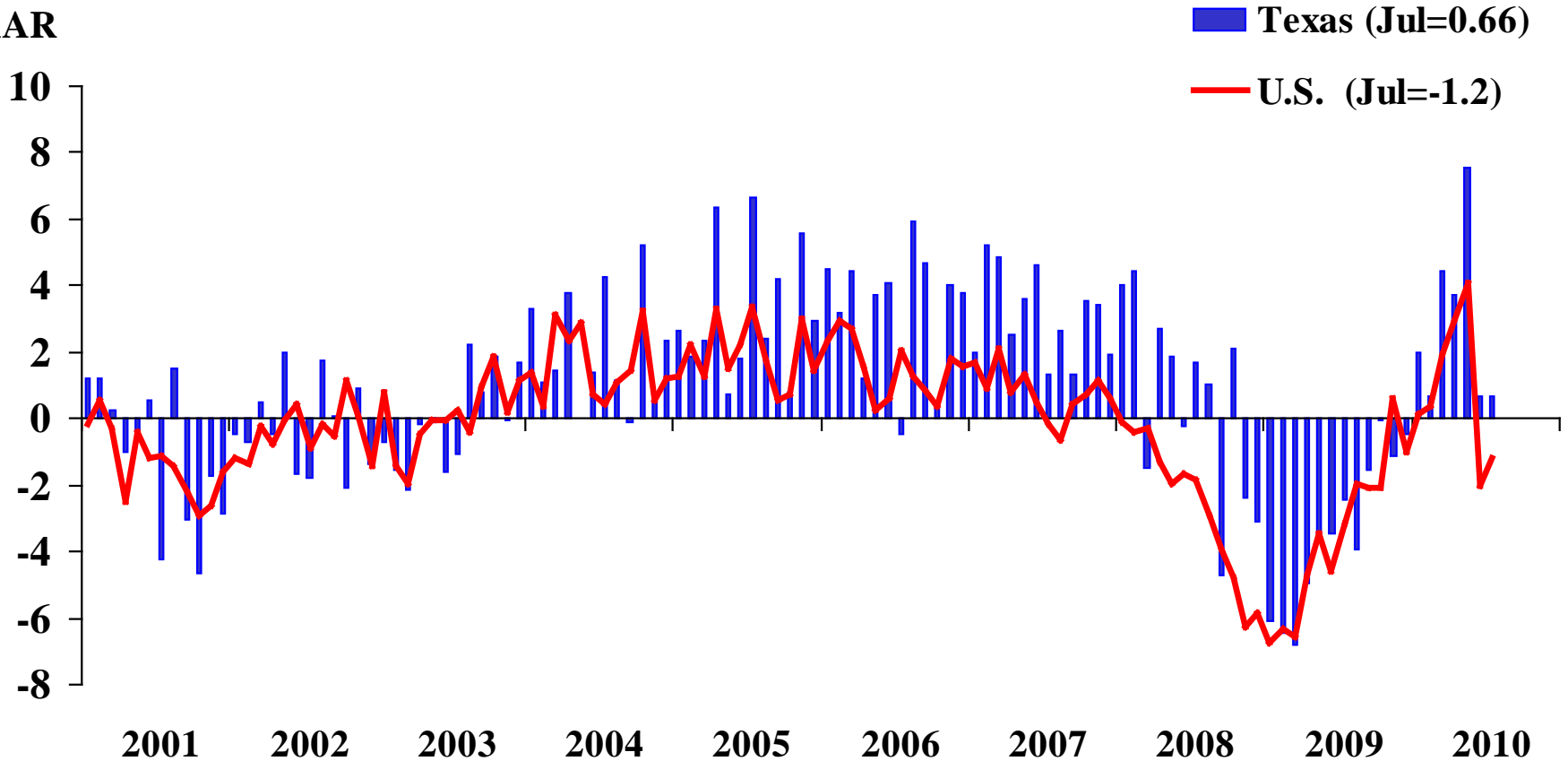
<http://www.dallasfed.org>



Texas Total Nonfarm Employment

Monthly Growth

1-month % change,
SAAR



Source: BLS/TWC, seasonal and other adjustments by FRB Dallas

<http://www.dallasfed.org>



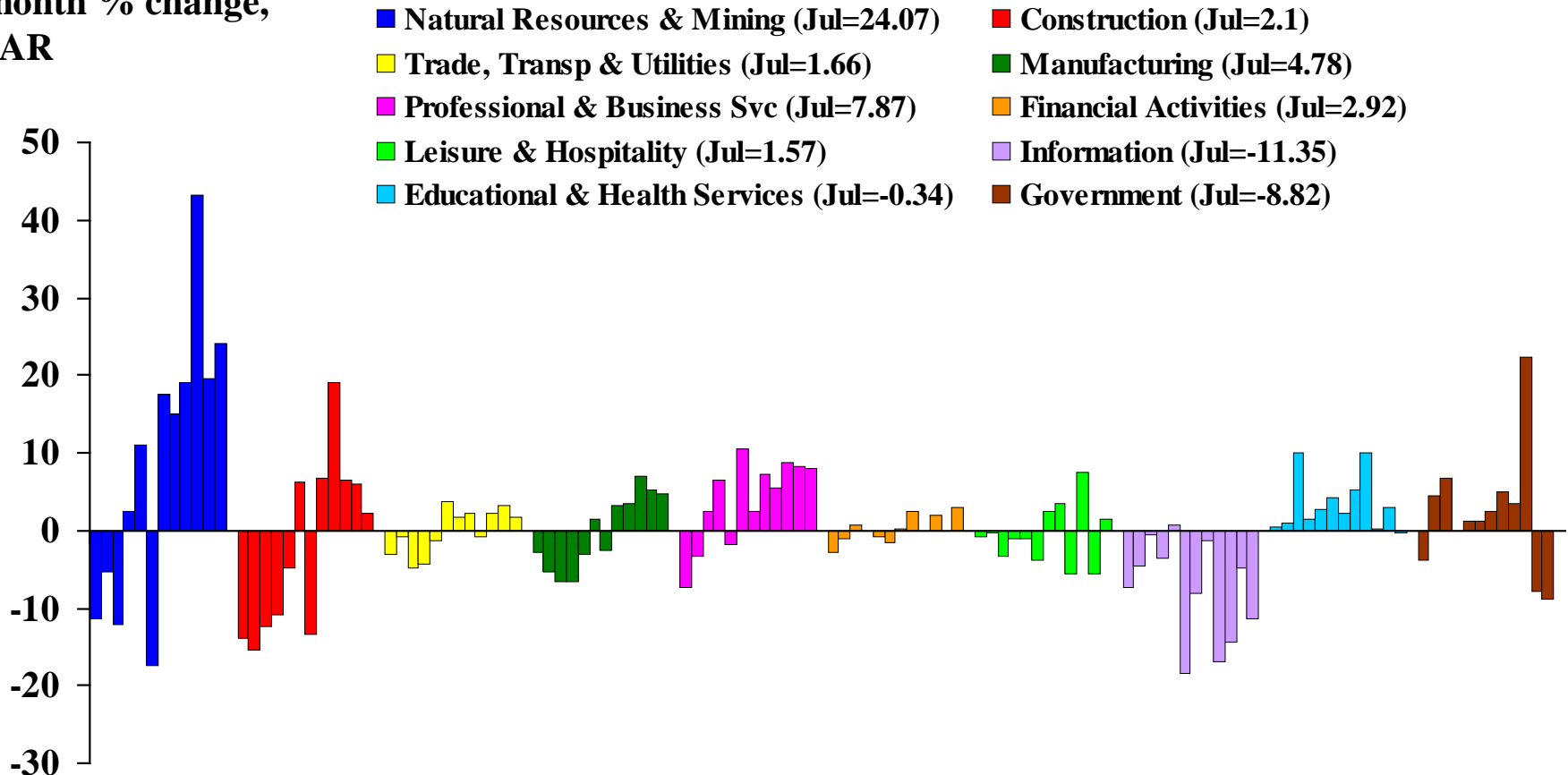
Texas Industry Employment

NAICS Super Sectors

Monthly Growth. SA by FRB Dallas

August 2009 - July 2010

1-month % change,
SAAR



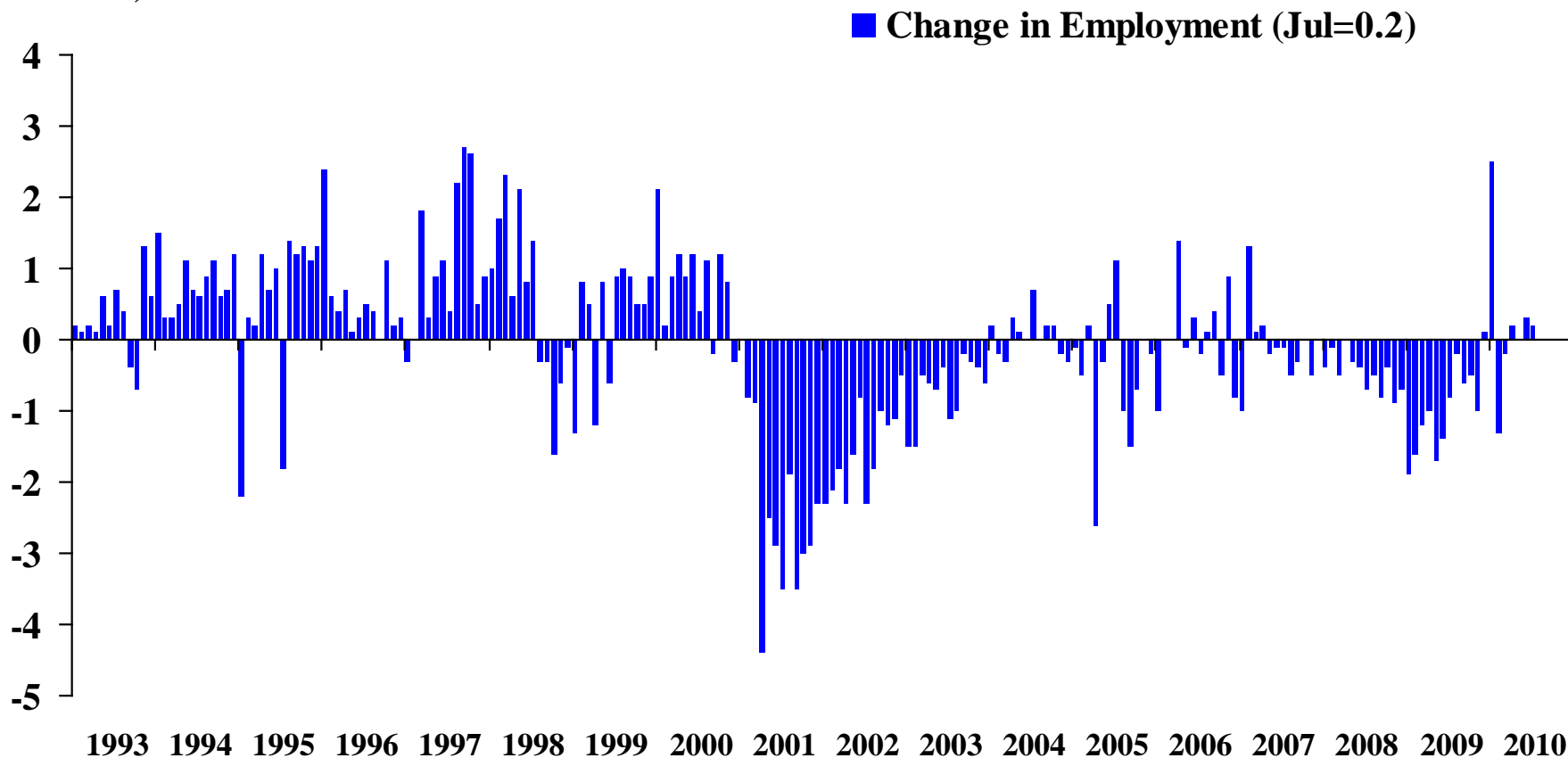
Source: BLS/TWC, seasonal and other adjustments by FRB Dallas

<http://www.dallasfed.org>



Texas High Tech Manufacturing Employment (Change in Employment)

Thousands, SA

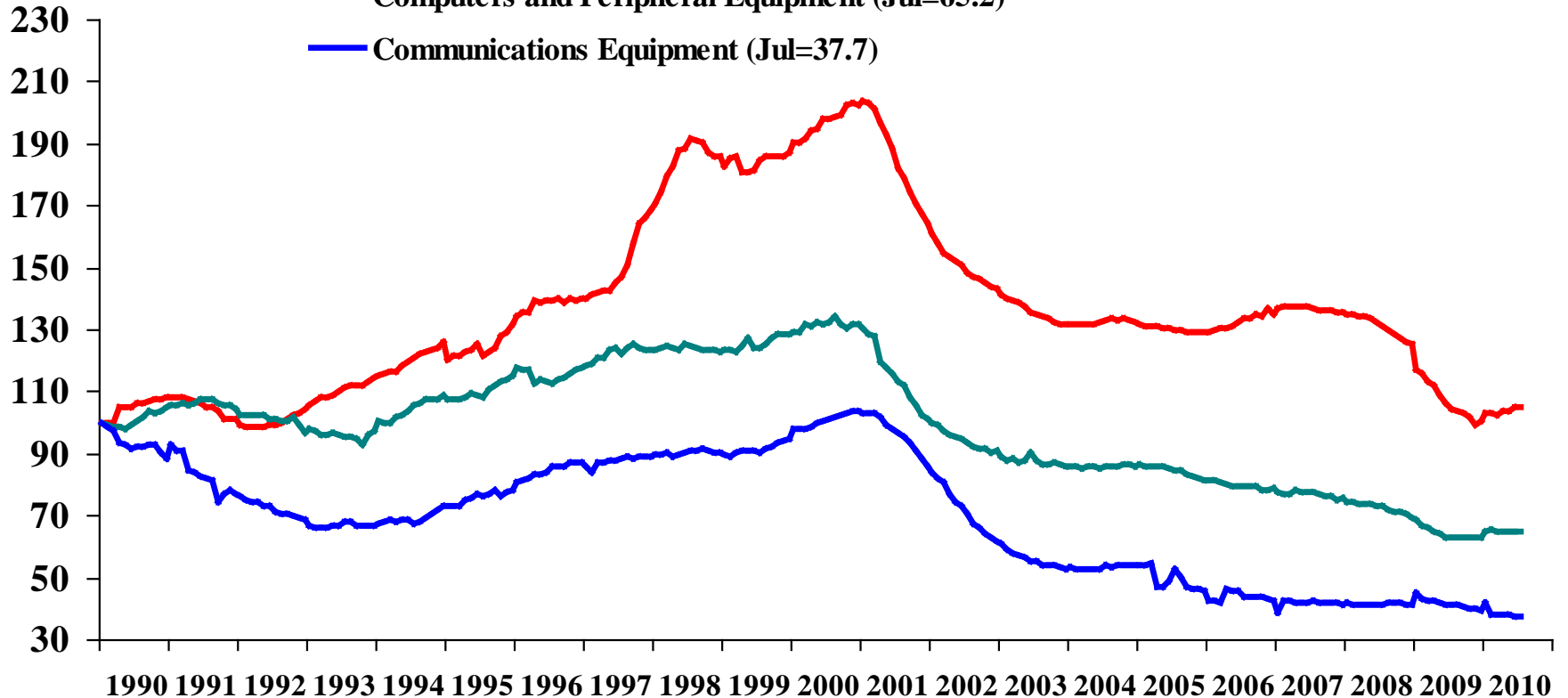




Texas High Tech Manufacturing Employment

Index,
Jan 1990=100

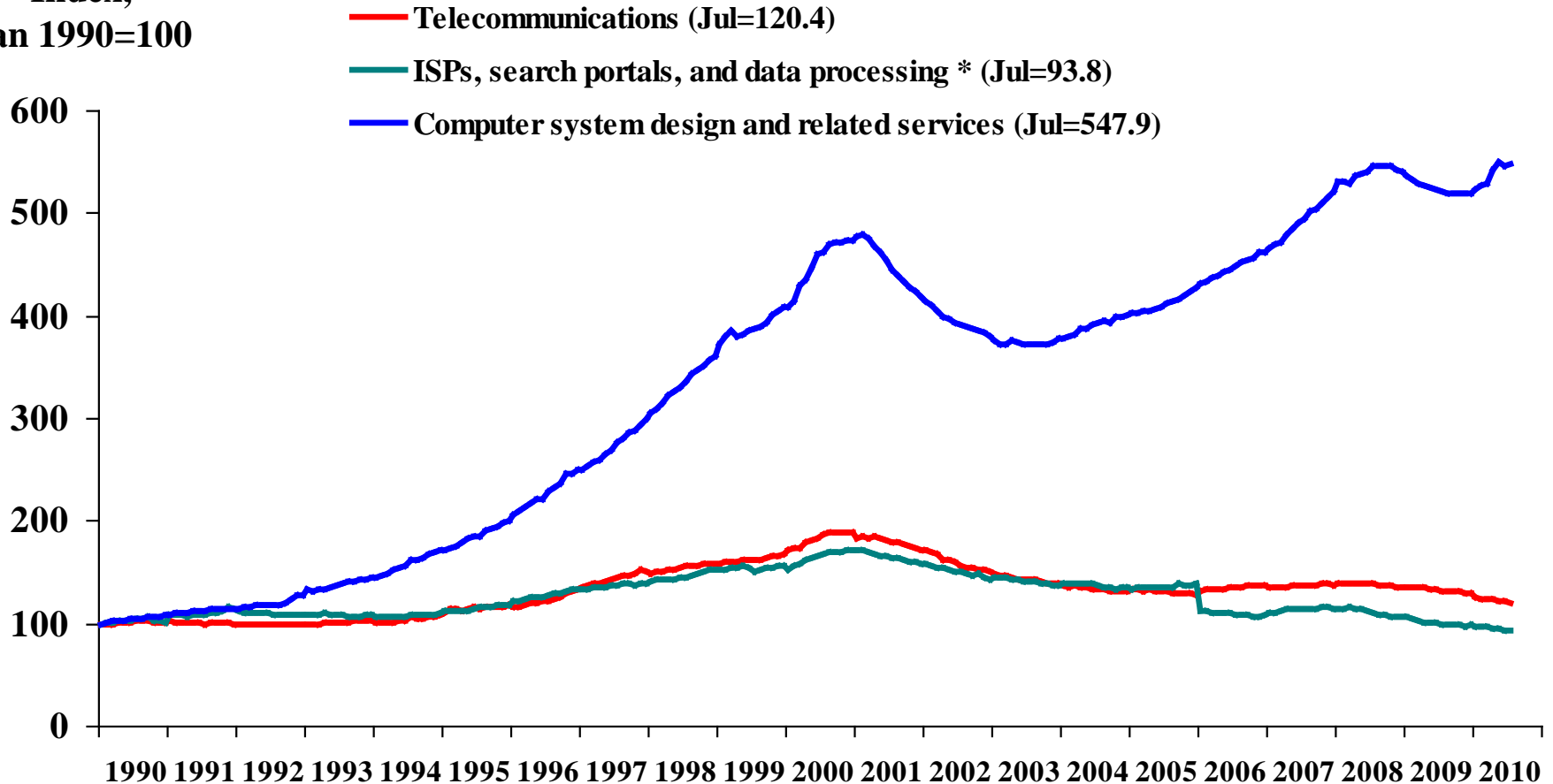
- Semiconductor & Oth. Electronic Components (Jul=105.2)
- Computers and Peripheral Equipment (Jul=65.2)
- Communications Equipment (Jul=37.7)





Texas High Tech Services Employment

Index,
Jan 1990=100



* The January 2007 drop in ISPs, search portals, and data processing is due to changes in NAICS codes.

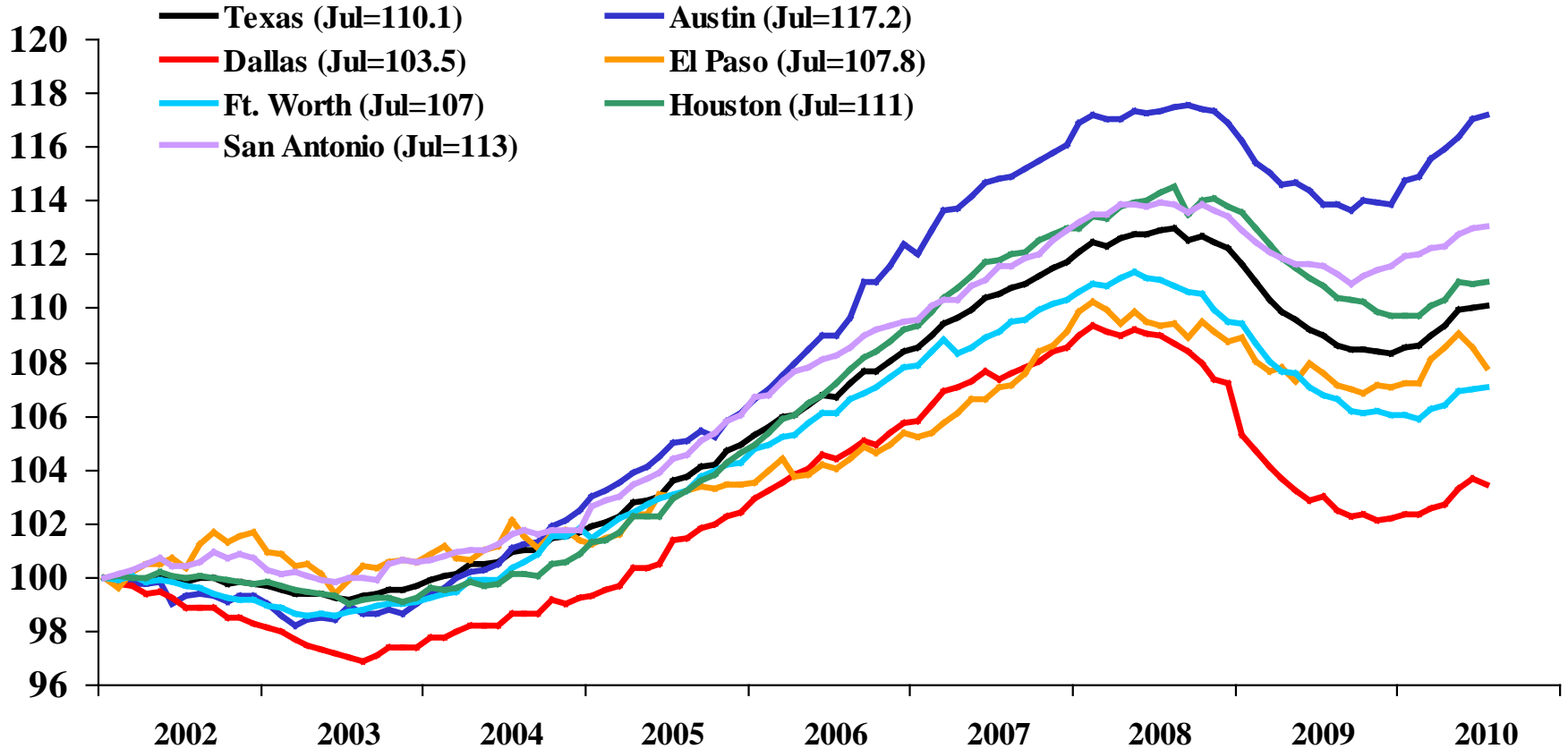
Source: BLS/TWC, seasonal and other adjustments by FRB Dallas

<http://www.dallasfed.org>



Texas Major Metro Area Employment

Index,
Jan2001=100



Source: BLS/TWC, seasonal and other adjustments by FRB Dallas

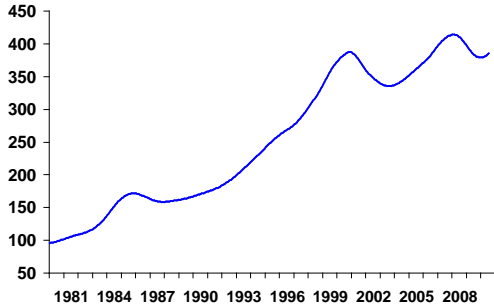
<http://www.dallasfed.org>



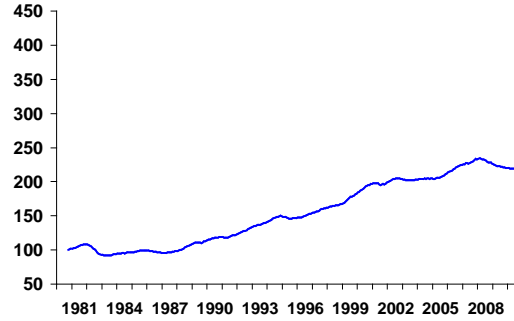
Texas Metro Business-Cycle Indexes

July 2010

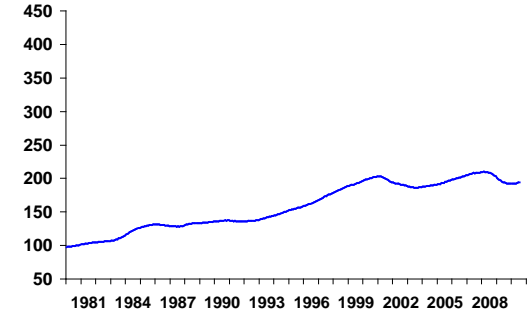
— Austin-Round Rock-San Marcos



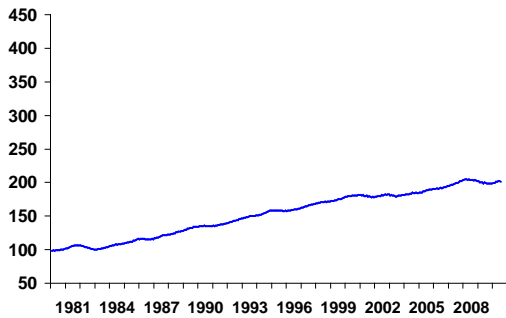
— Brownsville-Harlingen



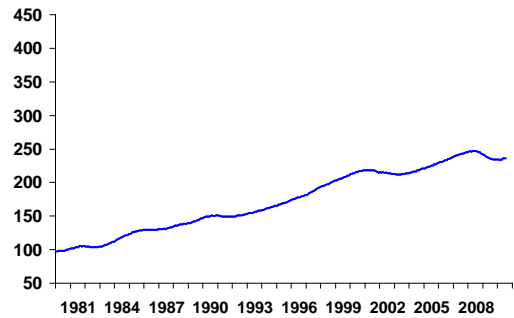
— Dallas-Plano-Irving MD



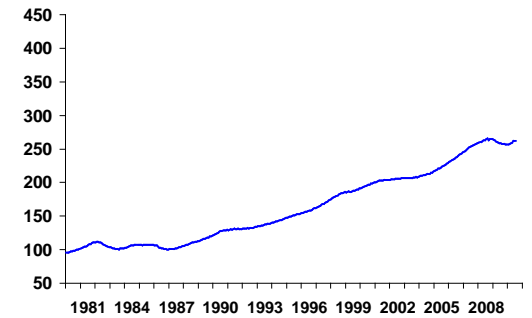
— El Paso



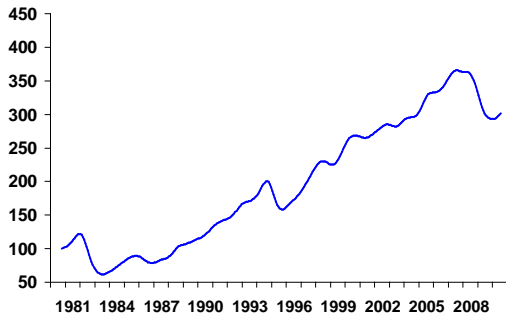
— Forth Worth-Arlington MD



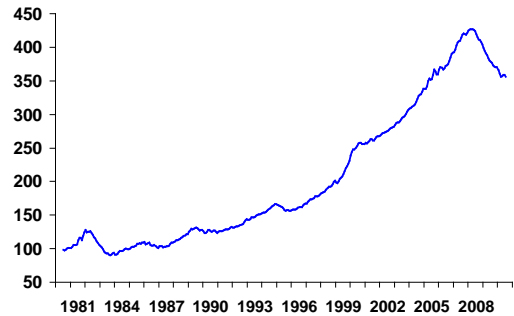
— Houston-Sugar Land-Baytown



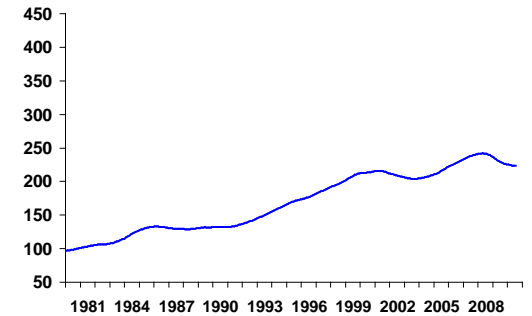
— Laredo



— McAllen-Edinburg-Mission



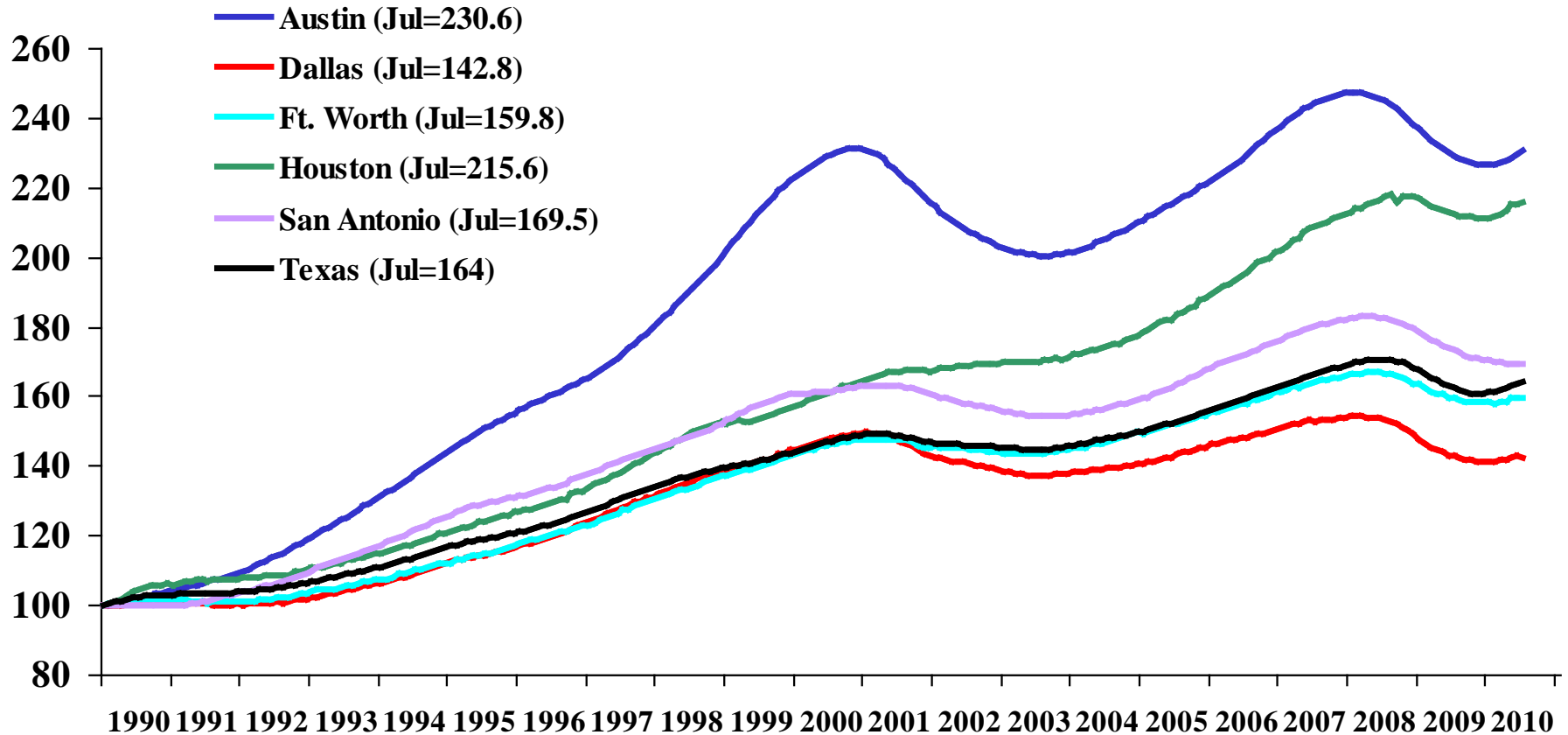
— San Antonio-New Braunfels





Texas Major Metro Area Business-Cycle Indexes

Index,
Jan1990=100



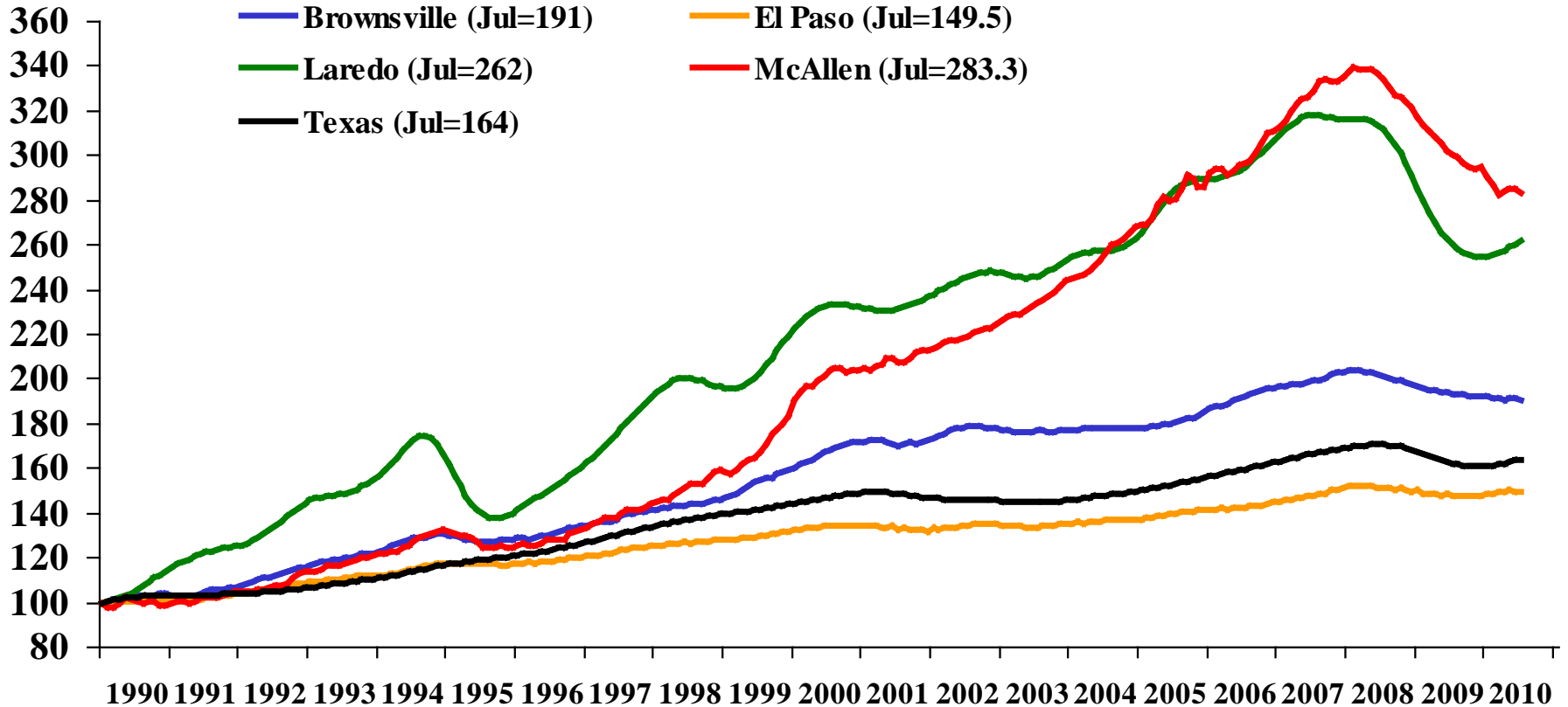
Source: FRB Dallas

<http://www.dallasfed.org>



Texas Border Metro Area Business-Cycle Indexes

Index,
Jan1990=100



Source: FRB Dallas

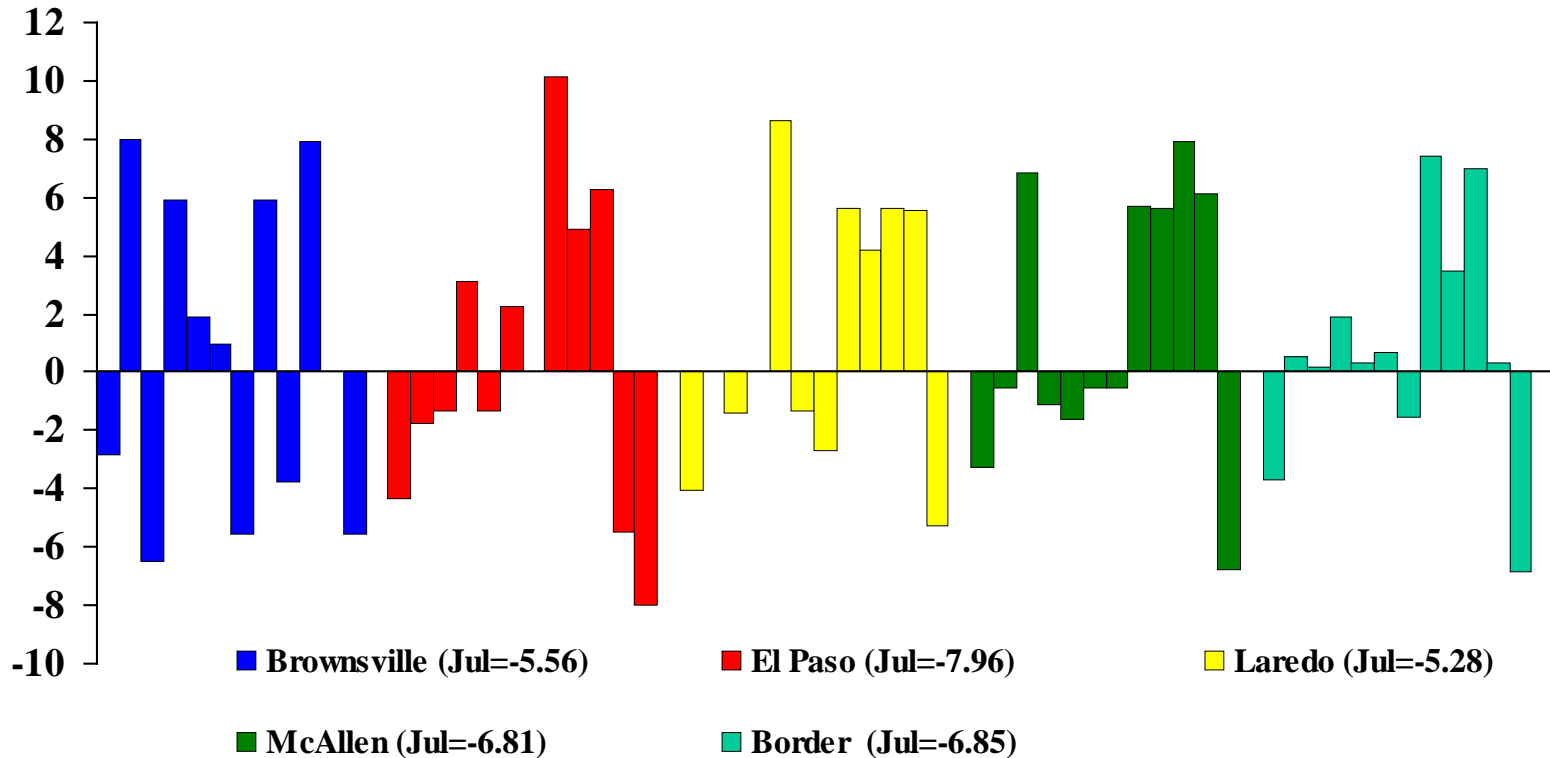
<http://www.dallasfed.org>



Texas Border Employment SA by FRB Dallas. Monthly Changes.

1-month % change,
SAAR

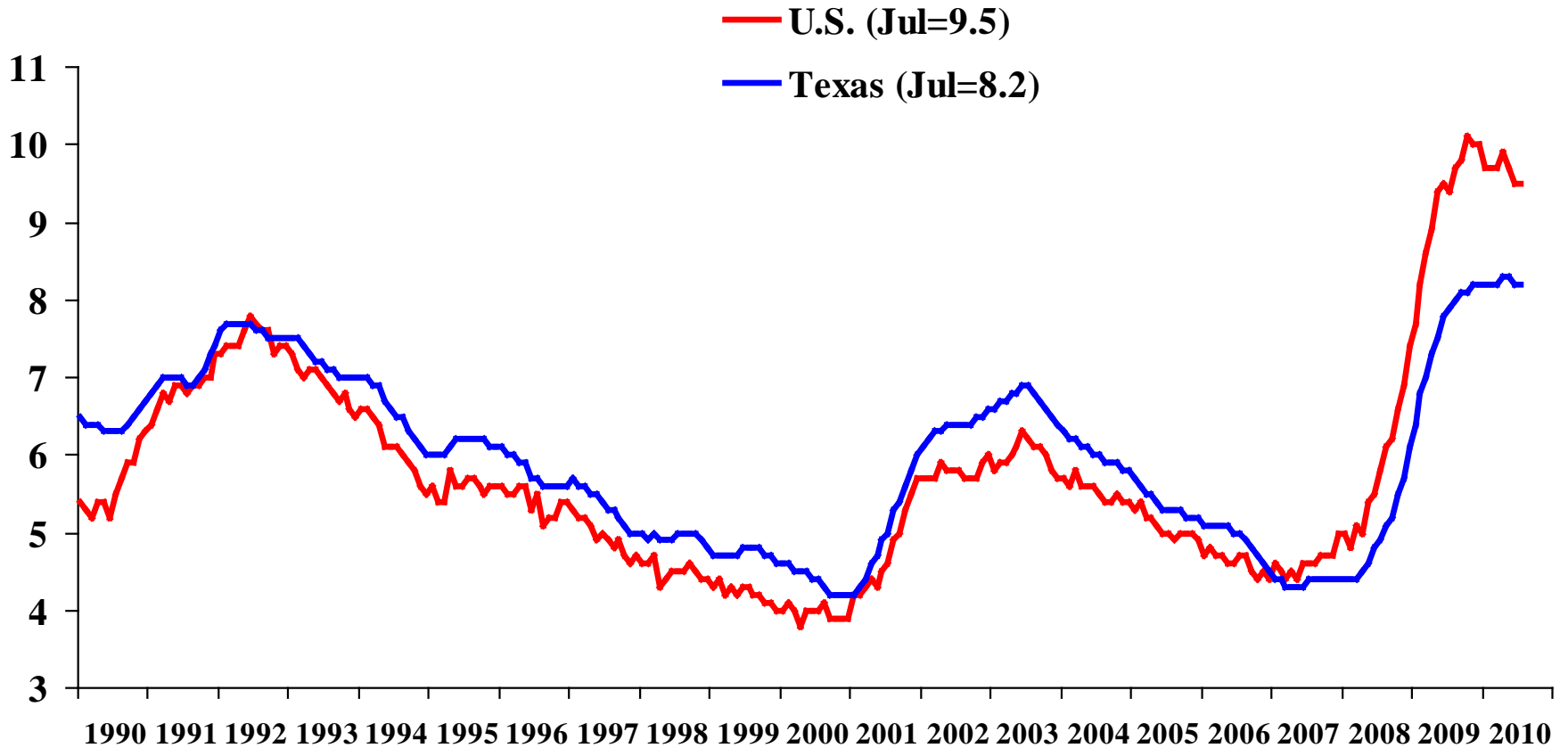
August 2009 - July 2010





Texas and U.S. Unemployment Rate

Percent, SA



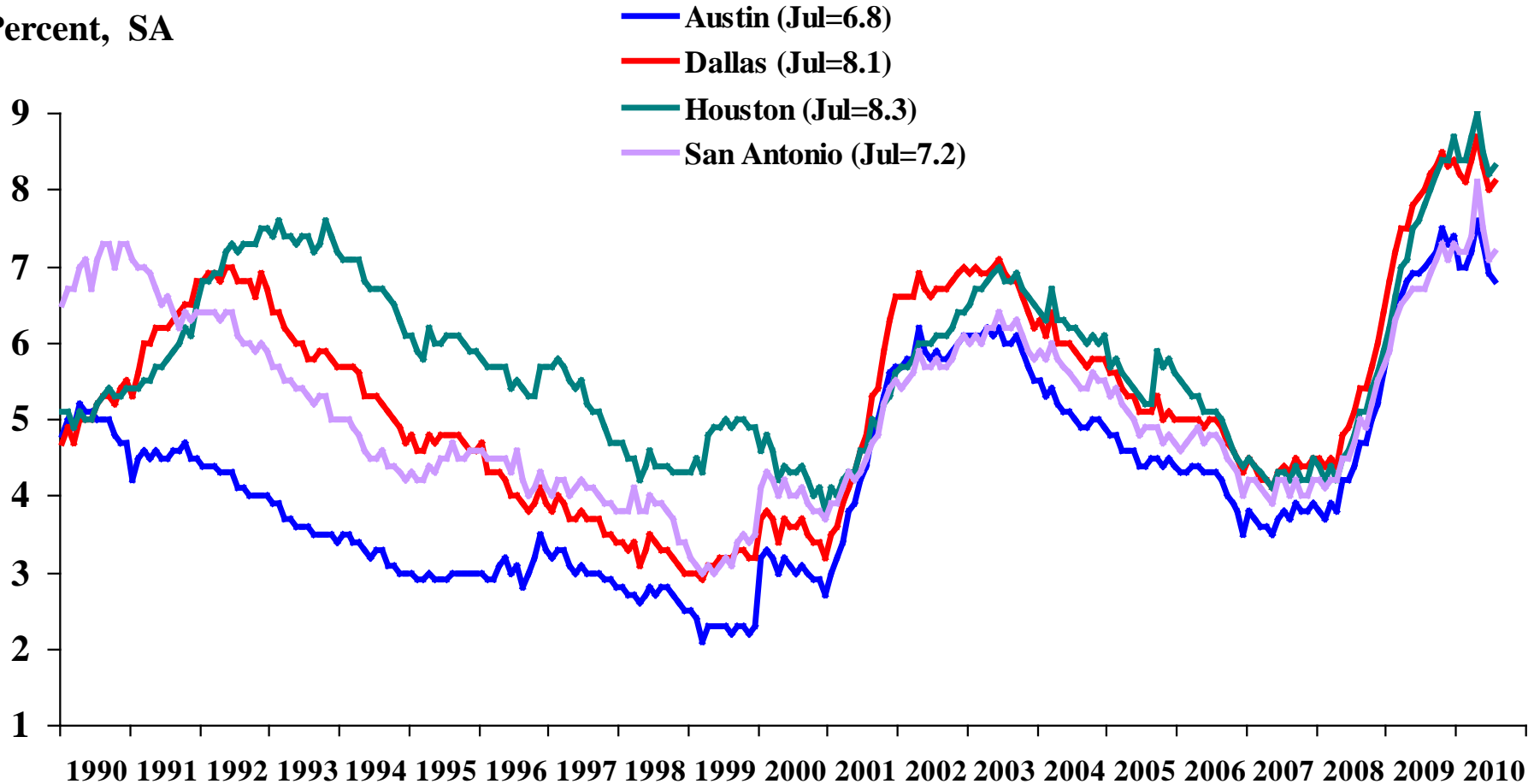
Source: BLS

<http://www.dallasfed.org>



Texas Major Metro Area Unemployment Rates

Percent, SA



Source: BLS, seasonal adjustment by FRB Dallas

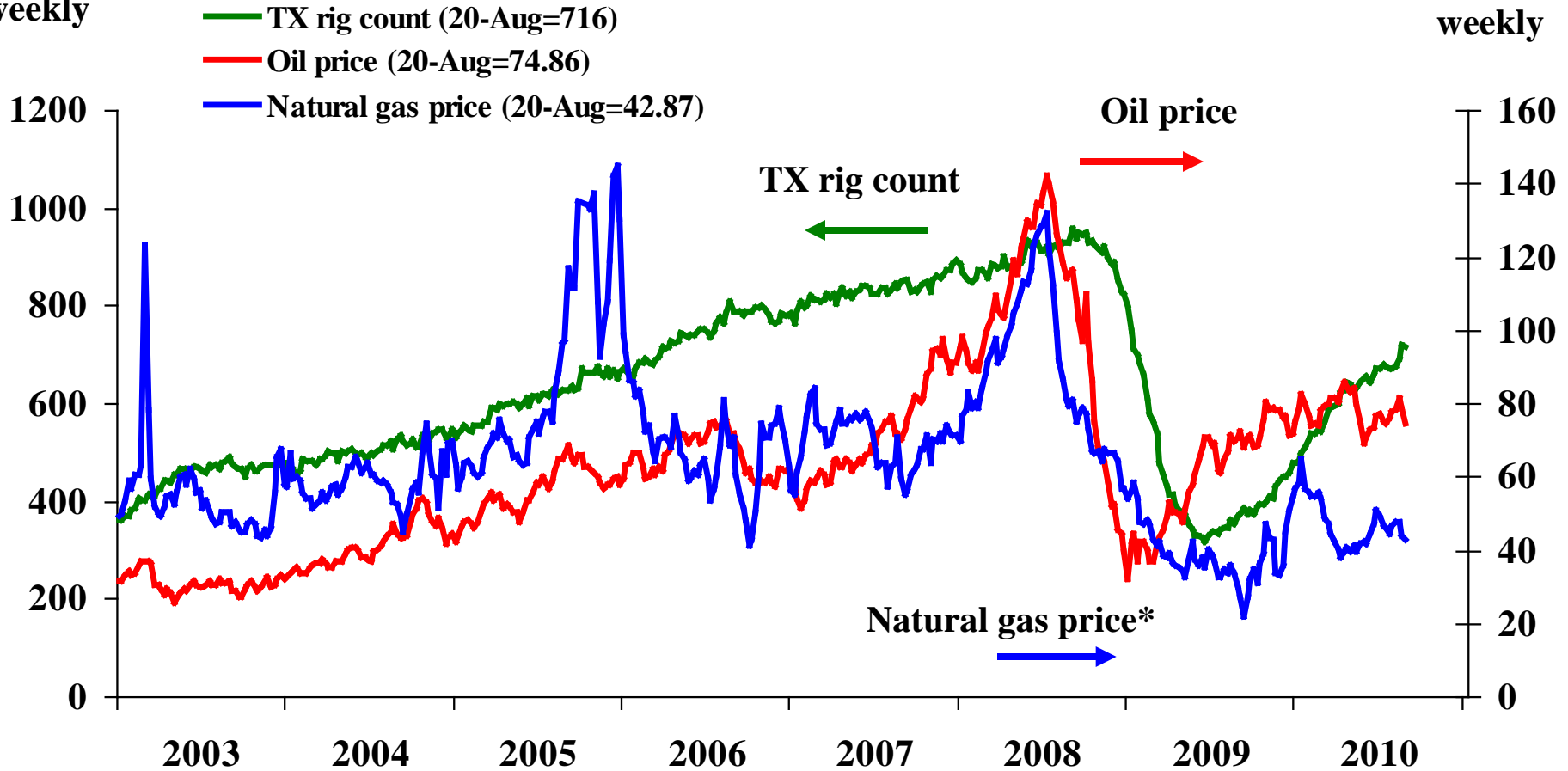
<http://www.dallasfed.org>



Energy Prices and Texas Rig Count

Rig count,
weekly

Nominal price, \$
weekly



* Natural gas price is multiplied by 10

Source: Wall Street Journal, Henry Hub, Baker Hughes

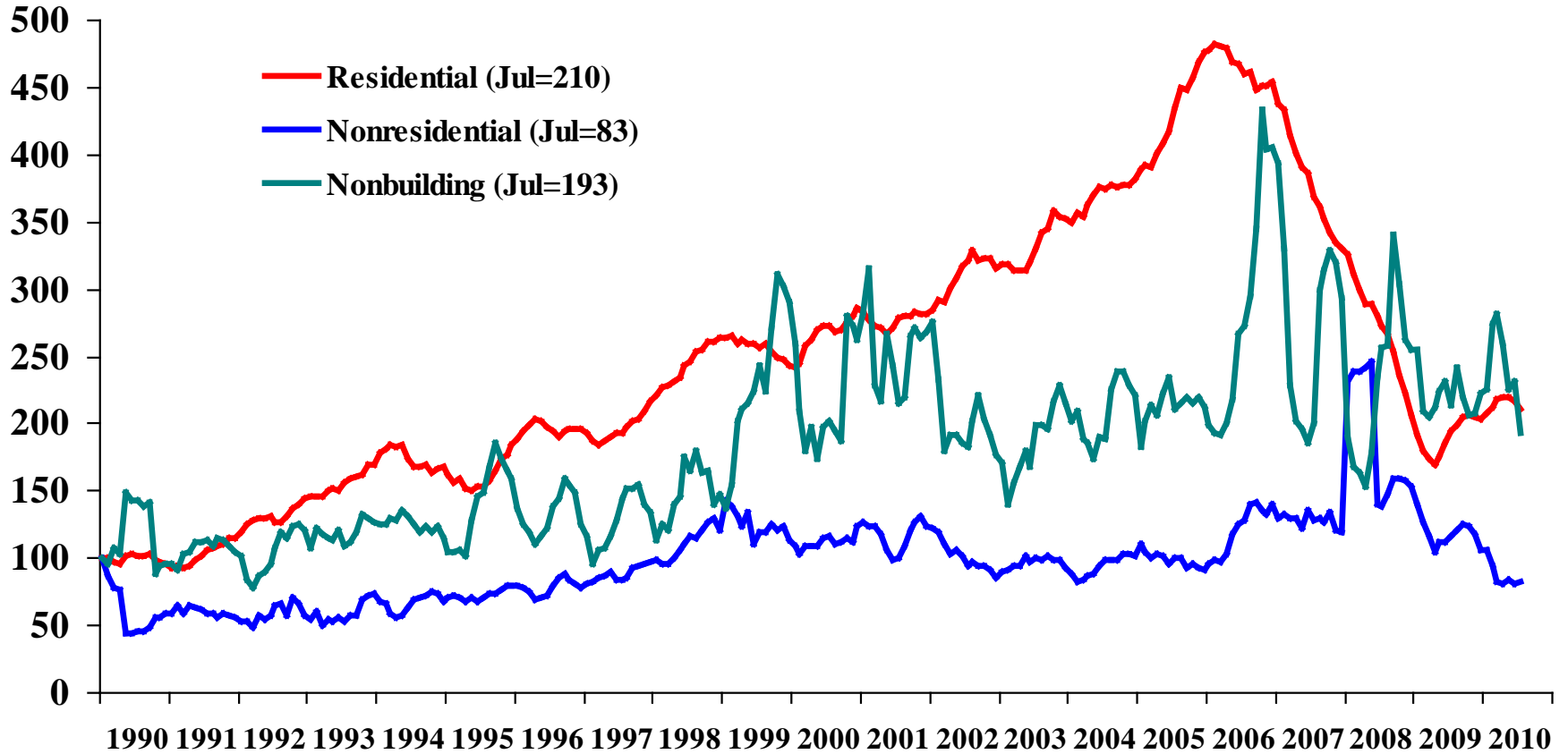
<http://www.dallasfed.org>



Real Texas Construction Contract Values

Index Jan 1990=100

SA, 5MMA

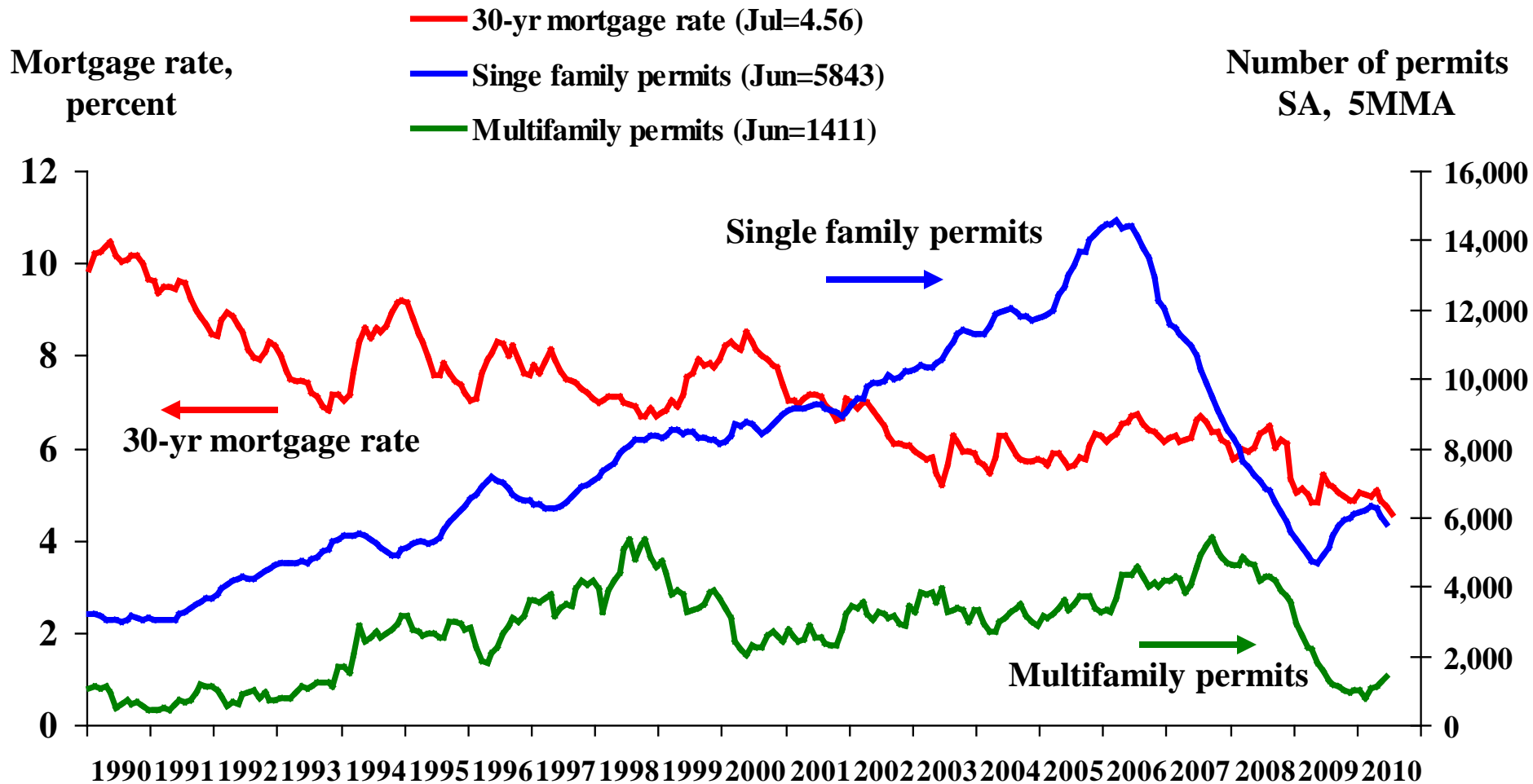


Source: McGraw-Hill Construction F.W. Dodge

<http://www.dallasfed.org>



Texas Residential Permits and Mortgage Rate



Source: Bureau of the Census

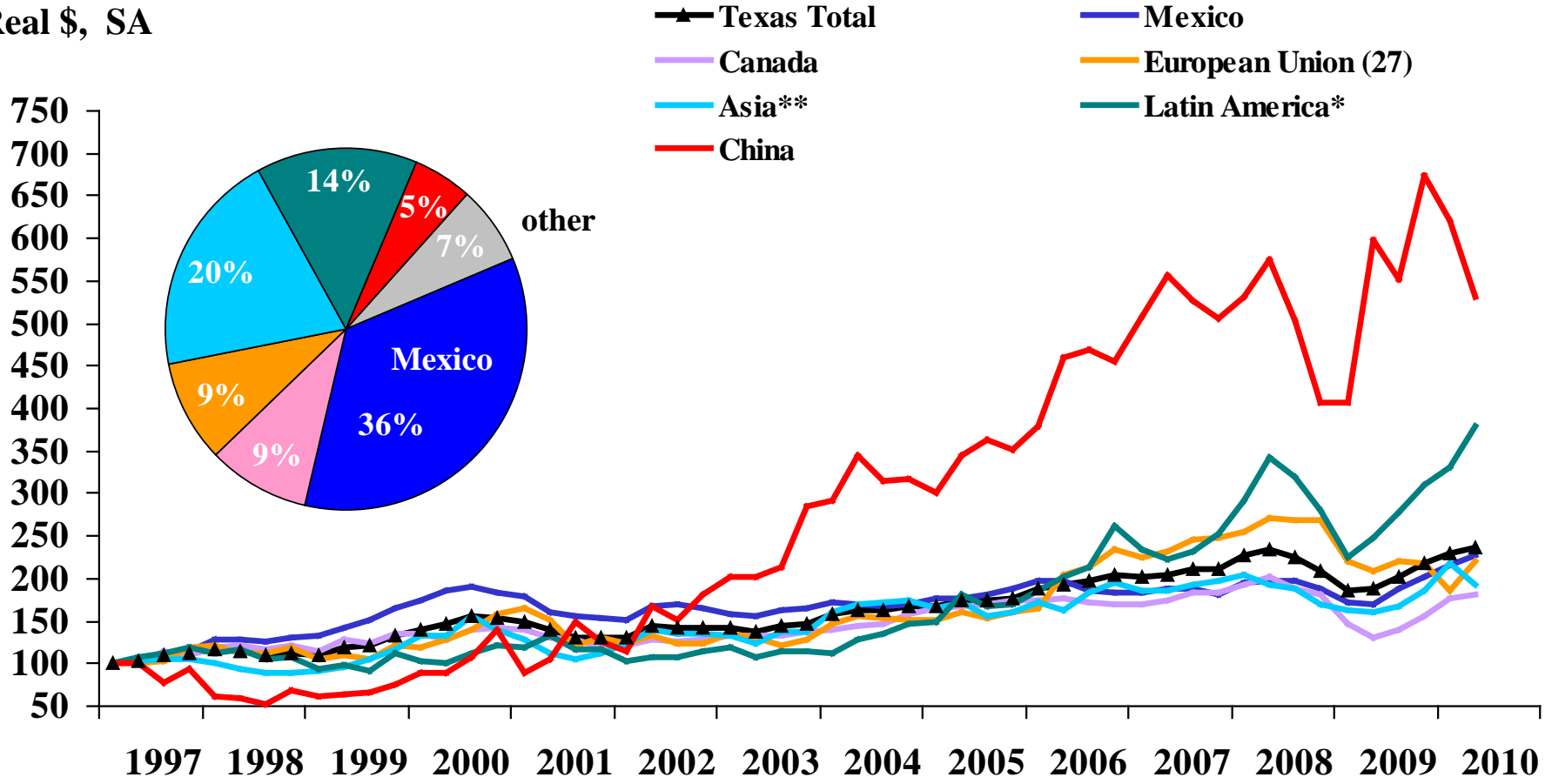
<http://www.dallasfed.org>



Texas Exports by Region

2010:Q2

Index, 97Q1=100
Real \$, SA



* Latin America excluding Mexico; ** Asia excluding China



Texas Exports by Industry

2010:Q2

Index, 97Q1=100
Real \$, SA

