



---

**Quasi-Specific Factors: Worker  
Comparative Advantage in the Two-Sector  
Production Model**

Roy J. Ruffin

December 1997

---

**Research Department**

**Working Paper**

**97-11**

---

**Federal Reserve Bank of Dallas**

**Quasi-Specific Factors: Worker Comparative Advantage  
in the Two-Sector Production Model**

Roy J. Ruffin<sup>1</sup>

This paper integrates the Heckscher-Ohlin, specific-factors, and Ricardian models of production with applications to international trade and labor economics. In international trade, factors of production need not be divided over trade policy and factor price equalization need not prevail. In labor economics, we show that the earning of economic rents is not inconsistent with competitive markets in general equilibrium and that process and skill-based innovations have contrasting effects on wage inequality.

This paper is based on the idea that in the long-run under conditions of perfect competition capital is more mobile between industries than labor. The empirical justification for this assumption is that workers possess comparative advantage, while, in the long-run at least, capital is perfectly fungible. Accordingly, this paper develops a tractable model that integrates three well-known general equilibrium models--the Heckscher-Ohlin model, the Ricardian model of worker comparative advantage, and the specific factors model. Such a model sheds some fresh light on a number of important issues in labor economics and international trade and allows a sharper

---

<sup>1</sup>University of Houston, Houston, TX, 77204; and Research Associate, Federal Reserve Bank of Dallas, Dallas, TX. The author wishes to thank Ron Jones, Chinhui Juhn, Paul Gregory, Peter Mieszkowski, and Yuka Ohno for their comments on an earlier version of this paper. The author alone is responsible for any errors. The views expressed in this paper are not necessarily those of the Federal Reserve Bank of Dallas or the Federal Reserve System.

distinction between skill-based productivity gains and process innovations on the industry level.

The Heckscher-Ohlin (HO) model of production is useful for the insights it yields into the relationships between commodity and factor prices, output and factor supplies, and the role of factor intensities. The Ricardian model of comparative advantage is useful for highlighting the role of relative productivity differences in determining how factors specialize in particular industries (Rosen, 1978; Ruffin, 1988). Finally, the specific factors model has been used to focus on the contrast between mobile and immobile factors within an economy (Samuelson, 1971; Jones, 1971a; Mussa, 1974; Neary, 1978) and their role in determining the course of real factor returns. By combining the three models, a single industry can be, say, capital-intensive and yet have numerous workers that have Ricardian comparative advantages (that is, earning economic rents) in that industry; yet, the model still retains some (but not all) of the familiar Heckscher-Ohlin properties.

Section I presents an overview of the model and its applications; and section II specifies the detailed equilibrium conditions. Sections III and IV examine the Stolper-Samuelson and factor price equalization theorems. Section V investigates the Rybczynski theorem. Section VI summarizes the impact of different kinds of technological change. Section VII sketches how to include the case of many types of labor, including a continuum. Finally, section VIII summarizes the paper.

## I. Preview and Applications

A specific factor is one that is always used in a particular industry and has an effective value of zero in any other industry; a quasi-specific factor is one that has a positive value in another industry and, thus, can be induced to leave the industry if its economic rents vanish.

Now consider a standard two-sector model in which there are two goods (1 and 2) and three productive factors: capital, quasi-specific effective labor for industry 1; and quasi-specific effective labor for industry 2. The two types of quasi-specific effective labor are produced under constant returns by either type 1 labor or type 2 labor. However, type 1 labor has a comparative advantage in producing effective labor for industry 1 and type 2 has a comparative advantage in producing effective labor for industry 2. For simplicity, we will refer to type  $i$  workers as having a comparative advantage in industry  $i$ , although strictly speaking such a comparative advantage is indirect. Capital is perfectly mobile between the two industries. Each type of labor can be used in either industry, but because of comparative advantage it may be the case that each labor type is completely specialized. When each labor type is completely specialized it is because economic rents are being earned, and there is no incentive to work in the other industry. Each good is produced by a standard constant-returns-to-scale production function with two inputs. Factor endowments are fixed.

Figure 1 shows the production-possibility curve for the

economy. In the range, AB, industry 1 is very small because the price of good 1 is low. This means that there are no economic rents earned by the workers who have a comparative advantage in that industry: they must work in industry 2 as well because otherwise they would be unemployed. If  $w_1$  is the wage of type 1 effective labor, in the range AB the ratio  $w_1/w_2$  is fixed. This is so because when two types of labor are used in an industry, in this case industry 2, wages exactly reflect productivity differences (which are assumed fixed). Now as the price of good 1 rises, eventually economic rents will appear for workers with a comparative advantage in that good; at that point, all type 1 workers will be in industry 1. We now enter the BC range of the production-possibility curve. In this range, both types of workers are completely specialized and the model works exactly like the specific factors model (Jones, 1971a; Samuelson, 1971). As the price of good 1 rises, the wage ratio  $w_1/w_2$  must also rise because capital is attracted away from industry 2 towards industry 1, driving down the return to type 2 labor just as in the specific factors model. As the price of good 1 continues to rise, the economic rent of type 2 workers eventually evaporates and some of these workers move into industry 1. This is the CD range of the production-possibility frontier; again, the ratio  $w_1/w_2$  is fixed. In the AB and CD ranges the model works exactly the Heckscher-Ohlin model; but one of the factors is earning an economic rent. The link between real wages and commodity prices is then entirely governed by factor-intensity conditions.

The advantage of including Ricardian comparative advantages inside the Heckscher-Ohlin model of competitive production is that one preserves the simplicity of such a model without sacrificing a somewhat richer and more intellectually satisfying interpretation of economic data. In a single model, we have features of specific factors, economic rents that are a function of price, and Heckscher-Ohlin properties such as the importance of factor intensity conditions. It is hoped that such a model might be useful to both trade economists and labor economists.

Trade economists should find such a model useful because they can work with a model that allows them to get away from some of the more peculiar results of the HO model. For example, in the two-by-two HO model, with identical production functions, the absence of frictions in goods markets or factor intensity reversals, factor price equalization obtains when both goods are produced in both countries. In the present model, factor price equalization breaks down not because there are three factors, but because it is sometimes the case that two of the factors do not directly compete with each other. Factor price equalization however will obtain, however, if there is a long-run trend in relative commodity prices.

Moreover, to trade economists the model allows one to escape from the straightjacket of Stolper-Samuelson when discussing wage issues. The Stolper-Samuelson theorem states that factor intensities, not comparative advantage, determines the course of real returns when prices change. Thus, in a Stolper-Samuelson

world all workers would want to protect the labor-intensive industry, whether working in that industry or not. In the present model, each worker may want to protect the industry in which he or she has a comparative advantage (we will say more about this issue later).<sup>2</sup>

Turning to the labor economics literature, the sharing of economic rents has been interpreted as indicating non-competitive labor markets (e.g. Blanchflower, et. al., 1996). However, in the present model no such interpretation is warranted because economic rents are price-determined in a competitive environment.

The model also shows that certain empirical issues can be illuminated by first principles. For example, in Juhn, et. al. (1993), it is reported that the ratio of skilled to unskilled wages stayed roughly constant in the 1960s but rose sharply in the 1980s. The 1970s were a transition period in which the education premium fell while the unobserved skill premium rose. This issue has been linked to trends in international trade, demand, or technology that favor skilled workers. The present model shows that permanent trends in relative commodity prices or technological progress in industrial processes will only result in temporary changes in relative wages. However, improvements in the skills of workers can have permanent effects (abstracting from the costs of training). Thus, I would argue that continued increases in the use of computer-aided technologies (documented

---

<sup>2</sup>Magee (1980) presents evidence that 19 out of 22 industries agreed on protection versus free trade.

in Berman, et. al., 1994) may only have temporary effects on wage inequality if the labor force itself does not improve its skills. In other words, we must make a sharp distinction between the impact of computers and the impact of education on observed wage inequality.

## II. The Model

Let us begin with a specific factors model. Two sectors use mobile capital and specific effective labor to produce goods under constant returns to scale. For given commodity prices and given endowments of capital and the two types of effective labor, capital moves between the sectors until its rental rate is equalized; this determines both the outputs of the two goods as well as the returns to the effective labor supplies.

Formally, industry  $i$  ( $i = 1, 2$ ) has the constant-returns-to-scale production function with all the usual concavity properties:

$$x_i = F_i(K_i, E_i), \quad (1)$$

where  $E_i$  is the effective labor used in industry  $i$ .

A convenient way to analyze the model is to utilize the constant-returns-to-scale assumption (Samuelson, 1953; Jones, 1971a). Let  $a_{Ki}$  and  $a_{Ei}$  denote the amounts of capital and effective labor per unit of good  $i$ . The price of each good,  $p_i$ , must equal the unit cost of production; thus,

$$a_{Ki}r + a_{Ei}w_i = p_i \quad (2)$$

where  $r$  and  $w_i$  are the prices of capital and effective labor. To keep the notation simple we suppress the dependence of the



$a_{ij}$ 's depend on the factor prices  $w_i$  and  $r$ . The two equations in (2), for given commodity prices, are not sufficient to determine the three factor prices. As in Jones (1971a), we must add the full employment conditions

$$a_{K1}x_1 + a_{K2}x_2 = K \quad (3)$$

$$a_{Ei}x_i = E_i \quad (i = 1,2) \quad (4)$$

The five equations (2)-(4) suffice to determine the two  $x_i$ 's, the two wages, and  $r$  for given values of the  $p_i$ 's, the  $E_i$ 's, and  $K$ .

To introduce Ricardian comparative advantage we need only suppose that effective labor is produced by the Ricardian production function:

$$E_i = L_{1i}/b_{1i} + L_{2i}/b_{2i} \quad , \quad (5)$$

where  $L_{ji}$  is the amount of type  $j$  labor employed in the production of effective labor of type  $i$ . The  $b_{ji}$ 's are the fixed Ricardian production coefficients; and, of course, represent the amount of raw labor required to produce a unit of effective labor. We could, of course, assume any number of such Ricardian factors (even a continuum); however, in the interests of simplicity, we will restrict our present analysis to only two such labor types. Later we shall indicate the implications of adding more Ricardian factors.

We assume that

$$b_{11}/b_{12} < b_{21}/b_{22}. \quad (6)$$

We are here assuming that type  $i$  labor has a comparative advantage in industry  $i$ , that is, in producing the effective

labor used in industry  $i$ .

We cannot solve the model as in the specific factors model because the quantities  $L_{ij}$  are not yet determined. However, in the range BC of Figure 1 each labor type is specialized in the industry in which it has a comparative advantage, that is  $L_{12} = L_{21} = 0$ . We can then solve for the factor prices by appending the equations

$$E_j = L_j/b_{jj} \quad (7)$$

where  $L_j$  is the supply of type  $j$  labor to the economy. The resulting effective wage rates (the  $w_j$ 's) can now be determined.

This solution will in fact prevail (for given  $p_i$ 's) provided no worker has an incentive to work in another industry. Let  $w_{ji}$  denote the wage type  $j$  worker earns in industry  $i$ . Of course, workers earn the value of their marginal product in producing effective labor. Given (5), it is easy to see that

$$w_{ji} = w_i/b_{ji} \quad (8)$$

In general, however, we cannot have workers of both types earning higher wages in same industry if both industries are to be viable. Type 1 workers cannot earn higher wages in industry 2, that is:

$$w_1/b_{11} \geq w_2/b_{12} \quad (9)$$

Similarly, type 2 workers cannot earn higher wages in industry 1, that is:

$$w_2/b_{22} \geq w_1/b_{21} \quad (10)$$

The differences between the two sides of the above inequalities simply measure the economic rents earned by each type of labor.

Both (9) and (10) will hold provided

$$b_{21}/b_{22} \geq w_1/w_2 \geq b_{11}/b_{12} \quad (11)$$

This, of course, is analogous to a similar condition in the Ricardian theory of international trade, with effective labor prices replacing commodity prices. It is impossible for the effective wage ratio to be outside the range depicted in (9); for, otherwise, all labor would be in one industry.

When the commodity price ratio is such that strict inequalities prevail in (11), the model will work exactly like the specific factors model. Let us denote the relative price of good 1 as  $p = p_1/p_2$ . In the open range defined by (11), as  $p$  rises, so will the effective wage ratio  $w_1/w_2$ . However, in the specific factors model a change in  $p$  has an ambiguous effect on the real return to capital--the mobile factor in this case--and clear-cut effects on the specific-factors (see Ruffin and Jones, 1977). However, in our case the quasi-specific factors, raw labor, may leave an industry if the return falls to the point of wiping out their economic rents. Now, as  $p$  rises, the output of good 1 will rise solely due to the attraction of capital out of industry 2 into industry 1. As the effective wage ratio rises, however, it will eventually hit the upper bound of (11). At this point type 2 workers are indifferent between working in the two industries. **It now seems clear that at this particular price ratio the model takes on a quite different flavor. Indeed, the model now becomes Heckscher-Ohlin with some of the attendant characteristics.**

This conclusion is very significant because it means that in a model with quasi-specific factors, we do not get simple relationships between commodity prices and real factor returns, as in either the HO or specific factors model. If, for example, the price of the capital-intensive good rises, at first the workers that have a comparative advantage in that good benefit while all other workers are hurt. But as the price continues to rise a point will be reached where all workers are hurt. On the other hand, if the price of labor-intensive good rises, the workers who have a comparative advantage in that industry benefit, other workers are hurt; but eventually all workers are helped as the price continues to rise.

These are useful results. We know from empirical studies that when profits in an industry rise, so-called skilled workers in that industry also benefit whereas the unskilled do not benefit so much (see Blanchflower, et. al, 1990). This fact may be explained by the current model. The current model implies, however, that such a relationship eventually depends on the factor-intensity of the industry in question, and that at extreme values factor intensities matter. This may help explain why Stolper-Samuelson effects are difficult to observe (see footnote 2); they apply to the extremes, not to the "normal" cases.

If capital is regarded as the mobile factor--i.e., the factor without long-run comparative advantages--then this model also suggests that for middle ranges of commodity prices the link between commodity prices and the real returns to capital is

ambiguous.<sup>3</sup> This, too, has some explanatory value. Few seem to care about the effects of tariffs, taxes, or subsidies on the returns to capitalists as much as the returns to labor. One explanation would be that labor's returns are more profoundly effected because it is the quasi-specific factor.

Let me now show these results formally. Suppose  $p$  changes so that the ratio of effective wage rates equals the lower or upper bound of (11); that is,  $w_1/w_2 = b_{j1}/b_{j2}$ . Now the pricing equations (2) become:

$$\begin{aligned} a_{K1}r + a_{E1}b_{j1}w_2/b_{j2} &= p \\ a_{K2}r + a_{E2}w_2 &= 1 \end{aligned} \tag{12}$$

The input-output coefficients  $a_{ji} = a_{ji}(r, w_i)$ ,  $j = K, E_i$ . Using the subsidiary relation  $w_1/w_2 = b_{j1}/b_{j2}$  we can obviously solve for  $r$  and the  $w_i$ 's for any given commodity prices. Notice that as  $p$  rises,  $w_1/w_2$  eventually jumps from  $b_{11}/b_{12}$  to  $b_{21}/b_{22}$ ; in the sequel it will be necessary to study the ramifications of this phenomenon.

How can we solve for outputs? When  $p$  is high enough so that  $w_1/w_2 = b_{21}/b_{22}$ , where both labor types work in industry 1, the output equations are:

$$a_{K1}x_1 + a_{K2}x_2 = K$$

---

<sup>3</sup>This model actually bears a striking resemblance to Jones and Ruffin (1975). In that paper there is mobile capital between two countries and the labor forces of the two countries produce two goods with different technologies. However, the labor force of each country may be regarded as a type of labor. Jones and Ruffin (1975) show that at least one country must specialize (in free trade), and one country may produce both goods, which means the country's labor force is split between two industries.

$$a_{E1}x_1 = L_1/b_{11} + L_{21}/b_{21} \quad (13)$$

$$a_{E2}x_2 = (L_2 - L_{21})/b_{22}$$

However, if we combine the last two equations in (13) we obtain

$$a_{K1}x_1 + a_{K2}x_2 = K$$

$$a_{E1}x_1 + a_{E2}x_2 b_{22}/b_{21} = L_1/b_{11} + L_2/b_{21} \quad (14)$$

In the low  $p$  case, where  $w_1/w_2 = b_{11}/b_{12}$  so that both labor types work in industry 2, the output equations are:

$$a_{K1}x_1 + a_{K2}x_2 = K$$

$$a_{E1}x_1 b_{11}/b_{12} + a_{E2}x_2 = L_1/b_{12} + L_2/b_{22} \quad (14')$$

Equations (12) and (14) or (14') parallel the standard HO model in the sense that we solve the pricing equations, (12), first and then the output equations, (14) or (14'), for the  $x_1$ 's. We will subsequently have occasion to analyze the quantity  $L_1/b_{1j} + L_2/b_{2j}$ , which is maximum amount of type  $j$  effective labor that the economy can generate. With this interpretative difference in factor endowments and the presence of economic rents in the earnings of one of the labor types it remains to study whether the standard properties of the Heckscher-Ohlin model hold.

### III. Stolper-Samuelson

The relationship between commodity prices and factor prices in the HO region of the economy is embedded in equations (12). It might appear that Stolper-Samuelson might have to be modified owing to the presence of the ratio  $b_{j1}/b_{j2}$ . However, it is there because  $w_1 = w_2 b_{j1}/b_{j2}$ ; therefore,  $\hat{w}_1 = \hat{w}_2$ , where the circumflex over a variable means a logarithmic derivative, e.g.,  $\hat{p} = dp/p$ . Totally differentiating equations (12) we find that the equations

of motion are identical in all respects to the standard HO model (see Jones, 1965):

$$\begin{aligned} \theta_{K1}\hat{r} + \theta_{E1}\hat{w}_2 &= \hat{p} \\ \theta_{K2}\hat{r} + \theta_{E2}\hat{w}_2 &= 0 \end{aligned} \quad (15)$$

We define  $\theta_{Ki} = ra_{Ki}/p_i$  and  $\theta_{Ei} = w_ia_{Ei}/p_i$ , where the shares must add to unity. To solve it is convenient to define

$$D(j) = \theta_{K1}\theta_{E2} - \theta_{E1}\theta_{K2} \quad (16)$$

We let  $D$  depend on  $j$  because, rewriting:

$$D(j) = (w_2r/p) [a_{K1}a_{E2} - a_{K2}a_{E1}b_{j1}/b_{j2}] \quad (16')$$

The index  $j$  in equation (16') denotes the labor type that is used in both industries. Thus, we have

$$\hat{w}_2/\hat{p} = -\theta_{K2}/D(j) \quad (17)$$

$$\hat{r}/\hat{p} = \theta_{E2}/D(j) \quad (18)$$

We must, of course, determine the sign of  $D(j)$ . If the capital share is higher in good 1 than in good 2, good 1 is capital-intensive so that  $\theta_{K1}/\theta_{E1} > \theta_{K2}/\theta_{E2}$  or that  $D(j)$  is positive.

Here it is important to note that we must define the capital-intensity of an industry by the financial ratios rather than the physical ratios,  $a_{Ki}/a_{Ei}$ ; for the physical ratios cannot really be compared since the denominator is in different units. Clearly, the effects of relative prices on real returns not only fit into the Stolper-Samuelson mold, they are of the same order of magnitude in the low- $p$  (where  $w_1/w_2 = b_{11}/b_{12}$ ) or the high- $p$  case (where  $w_1/w_2 = b_{21}/b_{22}$ ).

There is, however, one key difference between the present model and the standard HO model: factor intensity reversals are

possible with fixed factor endowments. This is clear from (16'). Comparing with (16) we see that if the production functions are Cobb-Douglas, where the  $\theta_{ij}$ 's are constant, factor-intensity reversals are not possible; however, in general, we must admit this possibility. As an example, if the production functions are Leontief, as  $b_{j1}/b_{j2}$  jumps from  $b_{11}/b_{12}$  to  $b_{21}/b_{22}$ , it is possible for the sign of  $D(j)$  to change. Therefore, the link between commodity prices and factor prices can differ in the two HO regions of the economy.

We will, however, make the super-strong assumption that the sign of  $D(j)$  does not change. This will surely be the case if the elasticities of substitution are not too much different from unity. The workings of the model are shown by Figure 2 under the assumption that good 1 is capital-intensive. In the upper panel, we show the relationship between the commodity price ratio and the effective wage ratio. In the range  $p \in (p', p'')$  we have the specific-factors model, with all type 1 labor in industry 1 and type 2 labor in industry 2; as the relative price of good 1 rises, so does the effective wage of type 1 labor compared to type 2 regardless of any factor intensity conditions. In the lower panel, we show that the relationship between the relative price of good 1 and the real earnings of type 1 labor is monotonically decreasing. This is so because when  $p < p'$  or  $p > p''$  the model takes on the key Heckscher-Ohlin characteristics; with good 1 capital-intensive, the real return to labor falls with the relative price of good 1. On the other hand, the



relationship between  $p$  and the real return of type 2 labor is non-monotonic; for in the specific-factors range of the model as the price of good 1 rises the return to type 2 labor falls regardless of factor intensities. Indeed, it must be the case that for one of the types of labor there is a monotonic relationship; while for the other it is non-monotonic. Thus, Figure 2 is perfectly general when there are no factor-intensity reversals, although the comparison between the real wages of the two types of workers can be anything (depending on absolute advantage).

What is interesting about this model is that the Heckscher-Ohlin character of the model appears at the extremes. This is not really surprising. The power of HO comes from competition from mobile factors: unless relative prices are at an extreme enough level to bring about competition between factors of different types, factor specificity will rule the day.

#### **IV. Factor Price Equalization**

Suppose we now have two countries, home and foreign, identical in all respects except factor endowments. The home country is well endowed with type 2 labor and/or capital. Figure 3 shows the relationship between commodity price and effective wage ratios for the home (H) and foreign (F) countries under the assumption that good 1 is capital-intensive. Imagine first that the two countries are exactly the same as in the foreign country, so that curve F describes the relationship. The specific-factor range is the interval  $(p', p'')$ . Adding more

type 2 labor to the home country would clearly raise  $w_1/w_2$  for any  $p$ ; so the H curve would have to be above the F curve. Why would more capital shift up the H curve compared to the F curve? Again suppose all endowments are the same as in F. Now add a bit more of mobile capital to the home country. The curve will shift up because more capital will favor the capital-intensive industry, and type 1 labor has a comparative advantage in that industry. This is easy to show: This comes directly from applying the "hat" calculus to equation (2). We are asking what happens to the effective wage ratio for fixed prices. When endowments change, factor prices change; from Shephard's Lemma it follows that  $\theta_{K1}\hat{r} + \theta_{E1}\hat{w}_1 = 0$ . Since  $\hat{w}_1 = -\hat{r}\theta_{K1}/\theta_{E1}$ , it follows that  $\hat{w}_1 - \hat{w}_2 = \hat{r}(\theta_{K2}/\theta_{E2} - \theta_{K1}/\theta_{E1})$ . Clearly, an increase in K depresses  $r$ -- so  $\hat{r}$  is negative. If good 1 is capital-intensive, so  $\theta_{K2}/\theta_{E2} < \theta_{K1}/\theta_{E1}$ , then  $w_1/w_2$  must rise.

Now we can discuss factor price equalization (FPE). The main proposition is that if  $p \in (p^\circ, p'')$ , there cannot be FPE. However, FPE can obtain if either  $p < p^\circ$  or  $p > p''$ ; and it will obtain, of course, if the factor endowments of the two countries are sufficiently close. Let us take the case where  $p > p''$ . In this case, equations (12) and (14) govern the model. The effective wage ratio is  $w_1/w_2 = b_{21}/b_{22}$ . Provided both goods are produced and there are no factor-intensity reversals, equations (12) for  $j = 2$  will determine the factor prices in both countries as long as the factor endowments of the two countries lie in the same cone of diversification (that is, the set of endowments

consistent with a single set of factor prices).<sup>4</sup>

Under all other circumstances FPE fails. For example, if  $p \in (p^0, p')$ , then in the foreign country the wage ratio is governed by  $w_1/w_2 = b_{11}/b_{12}$ , with type 1 labor working in both industries, but in the home country we are on the H curve itself and the relative price of type 1 labor is higher--FPE cannot hold.

#### V. The Rybczynski Theorem

I now want to investigate the Rybczynski theorem. We will show that if the Stolper-Samuelson theorem holds, so does Rybczynski. This may not seem remarkable; but in Jones (1971b) it is shown that when different factor prices are paid in two industries Stolper-Samuelson does not imply Rybczynski. However, there is a crucial distinction between factor market distortions as analyzed by Jones (1971b) and the current model: different factor prices reflect productivity differences in the present case so we would not expect the Jones result.

Let us just consider the case where the price of good 1 is such that some type 2 labor is involved in industry 1, that is, equations (14) apply. Earlier, we saw that factor intensity could be defined by using the financial ratios  $\theta_{K1}/\theta_{L1}$ . We now need to define the physical factor intensities. This is somewhat tricky because we no longer have a homogeneous labor force. Let us examine the last equation in (14), that is:

$$a_{E1}x_1 + a_{E2}x_2b_{22}/b_{21} = L_1/b_{11} + L_2/b_{21} .$$

---

<sup>4</sup>See Chipman (1966).

The quantity  $L_1/b_{1j} + L_2/b_{2j}$  is the maximum amount of effective labor of type  $j$  that can be produced in the economy; call this quantity  $V_j$ . When relative prices are fixed, so are the  $a_{ij}$ 's as in the standard model. Let us define  $\lambda_{Ki} = a_{Ki}x_i/K$  (as usual); but define  $\lambda_{Eij} = a_{Ei}x_i/V_j$ . Consider now a change in factor endowments only. Now, differentiation of (14) leads to:

$$\begin{aligned}\lambda_{K1}\hat{x}_1 + \lambda_{K2}\hat{x}_2 &= \hat{K} \\ \lambda_{E11}\hat{x}_1 + \lambda_{E21}\hat{x}_2 b_{22}/b_{21} &= \hat{V}_1.\end{aligned}\tag{19}$$

Recall the definition for the financial ratios in (16'):  $D(2) = (w_2r/p)[a_{K1}a_{E2} - a_{K2}a_{E1}b_{21}/b_{22}]$ . In this case, type 2 labor is used in both industries. Now for the physical case, note that

$$\begin{aligned}\Delta(2) &= \lambda_{K1}\lambda_{E21}b_{22}/b_{21} - \lambda_{K2}\lambda_{E11} \\ &= (x_1x_2/KV_1)(a_{K1}a_{E2}b_{22}/b_{21} - a_{K2}a_{E1}).\end{aligned}\tag{20}$$

Obviously,  $D(2)$  is positive or negative as  $\Delta(2)$  is positive or negative. Accordingly, solving for  $\hat{x}_i$  we find

$$\hat{x}_1 = \hat{K}\lambda_{E21}b_{22}/\Delta(2)b_{21} - \hat{V}_1\lambda_{K2}/\Delta(2)\tag{21}$$

$$\hat{x}_2 = \hat{V}_1\lambda_{K1}/\Delta(2) - \hat{K}\lambda_{E11}/\Delta(2)\tag{22}$$

Clearly, since  $\Delta(2)$  is positive when good 1 is capital-intensive, we obtain the familiar Rybczynski result that an increase in  $K$  increases (decreases) the output of good 1 (good 2) while an increase potential effective labor  $V_1$  increases (decreases) the output of good 2 (good 1). A similar result would obtain if type 1 labor were used in both industries. We thus obtain the theorem that in any of the HO ranges of the economy the familiar Stolper-Samuelson and Rybczynski results obtain; however, unlike the standard HO model, there can be factor intensity reversals

between the HO regions.

## **VI. Technological Change**

We now consider the impact of technological change on production patterns and factor prices, holding commodity prices constant. Given the two-level production function, it is obvious that technical change can either effect the production of effective labor ("skill-based technological change") or technical change in the industry itself by virtue of new insights into combining capital and effective labor ("process technical change"). I will only consider cases of neutral technical change. Moreover, just because the model permits a distinction between the two types of technological change does not mean that the real world works that way. Nevertheless, we proceed as if it does and ask whether it makes any difference.

If the Ricardian production function does not change, that is, if the productivity of raw labor remains constant, an improvement in the conversion of effective labor and capital into goods will have an impact that is similar to a change in commodity prices. As pointed out by Findlay and Grubert (1959) and analyzed in detail by Jones (1965), one can consider neutral technological progress as fully equivalent to an increase in the price of a good. If we consider the unit value isoquant for any good, if the price increases the isoquant moves in uniformly along any ray from the origin; the same occurs with neutral technological progress. Accordingly, whether there is an increase in the price of a good or neutral technological

progress, one achieves a parallel impact on resource allocation and factor prices. Thus, holding commodity prices constant, neutral technological improvement in an industry will bring about expansion of such an industry and will, of course, benefit those factors with a comparative advantage in that industry or the factor in which the industry is intensive in the Heckscher-Ohlin region of the economy. Such technical change will only change wage inequality if it occurs in the specific-factors region of the economy; otherwise, either all wages rise or fall.

What is the impact of skill-based technological change? It should be obvious that if a group of workers become more productive their market wages will rise relative to other groups. This has a quite different impact on observed wages; but if such technological change reflects investments in human capital it is questionable whether wages net of these costs show divergent trends. To properly analyze this it is necessary to include learning-by-doing and human capital investments. However, the end result is higher productivity and it may be useful to just consider the consequences of autonomous improvements in some worker's productivity. Let us suppose that good 1 is the skill-based good so that type 1 labor can be considered skilled labor compared to type 2 labor. The ratio  $b_{2j}/b_{1j}$  is type 1 labor's productivity advantage over type 2 labor in industry  $j$ .

To be concrete I assume that type 1 wages are higher than type 2 wages. Now suppose that type 1 labor becomes uniformly more productive in all industries. Since each  $b_{1j}$  falls by the

same percentage, the ratio  $b_{11}/b_{12}$  remains constant. The effect of this on wage structure depends on the region in which the economy is operating.

First consider the case in which the economy operates in either one of the HO regions of the economy. In this case,  $w_1/w_2 = b_{j1}/b_{j2}$  so that nothing happens to effective wages, as is clear from the pricing equations (12). However, type 1 wages will rise by the improvement in their productivity ( $w_{1j} = w_j/b_{1j}$ ) and wage inequality will rise by exactly the same proportion because wages of type 2 workers remain exactly the same ( $w_{22} = w_2/b_{22}$ ). However, due to Rybczynski effects, whether the economy moves away from or deeper into the HO region depends on whether the relative price of capital-intensive goods is low or high. When type 1 labor becomes more productive, Rybczynski effects become relevant and the output of the capital-intensive good must fall, as is clear from either (14) or (14'). If the price of the capital-intensive good is already low, the economy will become more deeply entrenched in the initial HO region; if the price of the capital-intensive good is high, the economy will move towards the specific factors region on the economy.

If the productivity enhancement occurs when the economy is in the specific-factors region of the economy, an improvement in type 1 labor's productivity will cause wage inequality to rise by more than the rise in productivity. This is because the effective wage of type 1 workers will rise while the effective wage of type 2 workers will fall, thus enhancing the impact of

the improvement in type 1 workers' skills. However, the economy's production of good 1 will rise relative to good 2. Eventually, the economy will find itself in the Heckscher-Ohlin region of the economy. Once this occurs, a uniform improvement in type 1 labor's productivity will have no impact on the effective wage ratio, for given commodity prices, but will have a proportionate impact on the real earnings of type 1 labor.

### VII. Some Possible Extensions

Let us now consider extending the model to include more Ricardian factors. For concreteness imagine a third Ricardian factor--call it  $z$ --such that

$$b_{11}/b_{12} < b_{z1}/b_{z2} < b_{21}/b_{22} \quad (22)$$

Clearly, it is now possible for the effective wage ratio to be equal to  $b_{z1}/b_{z2}$ . At this point, type  $z$  labor is employed in both industries--but type 1 labor and type 2 labor are earning economic rents and so are entirely specialized. However, the effective wage ratio will be fixed until all type  $z$  labor is absorbed in one industry or the other. In the range of commodity prices where type  $z$  labor works in both industries, any change in prices will exert Stolper-Samuelson effects on the effective wage rates--just as before. For example, if good 1 is capital-intensive, an increase in  $p$  will depress both  $w_1$  and  $w_2$  by equal percentages. However, the model no longer works like the specific-factors model. Clearly, the more labor-types that exist in the economy the smaller will be the specific-factors range of the economy. Indeed, with a continuum of labor types, it would



appear that the model would always behave exactly like the HO model in small comparative statics exercises--with this exception: factor price equalization would be very unlikely.

However, if a continuum is considered unrealistic, the case of a finite number of labor types leads to some interesting conclusions. For example, if there are three labor types, the most likely scenario is for two labor types to work in one industry and one in the other industry. In this case, the model retains its specific factors flavor. If the price of any good increases, the real returns to all those specific factors working in an industry will increase, regardless of factor intensity conditions. Such a result appears to help explain the results of Blanchflower, et. al. (1990), where they found that increasing the profits of an industry appear to be shared by the "skilled" workers in that industry. Whether their conclusion is best explained by the current competitive model or their non-competitive model is an issue that needs to be explored by examining the additional implications of the two models.

#### **VIII. Summary.**

This paper shows that by integrating the Heckscher-Ohlin, specific-factors, and Ricardian models of production it is possible to achieve a tractable model capable of addressing important issues in labor economics and international trade. In international trade, factors of production need not be divided over issues of free trade or protection and factor price equalization need not prevail. In labor economics, we show that

the earning of economic rents is not inconsistent with competitive markets in general equilibrium and that process and skill-based innovations have contrasting effects on wage inequality. Process innovations may lead to wage inequality, but cannot cause a permanent trend; skill-based (for labor) innovations will cause trends in wage inequality, and may strengthen or weaken Heckscher-Ohlin properties.

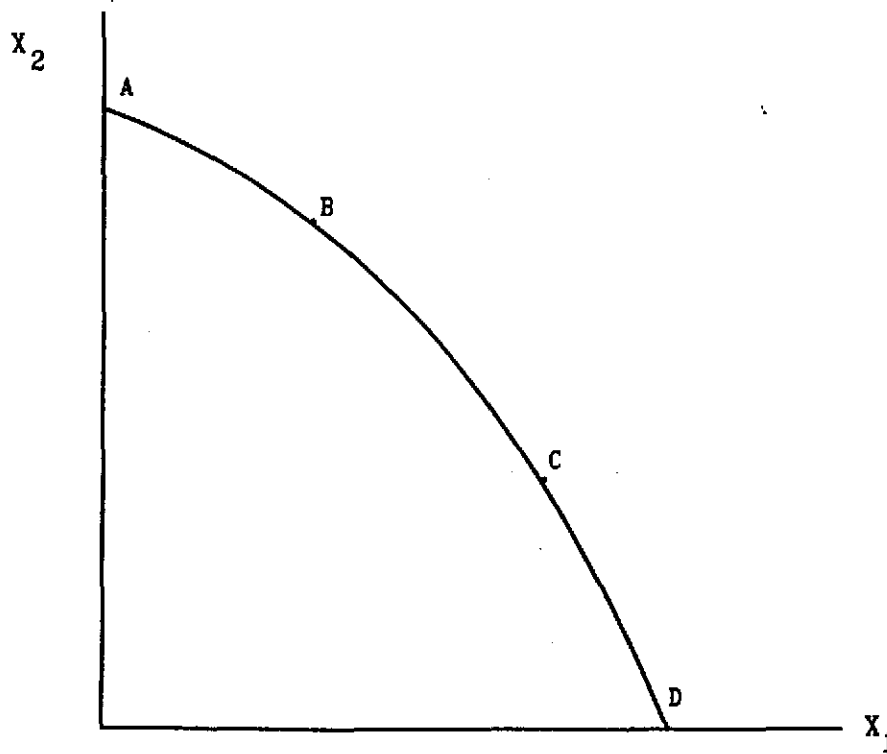
## REFERENCES

- Berman, E., J. Bound, and Z. Griliches. 1994. "Changes in the Demand for Skilled Labor within U.S. Manufacturing: Evidence from the Annual Survey of Manufacturers," *Quarterly Journal of Economics*, 109: 367-397.
- Blanchflower, D. G., A. Oswald, and P. Sanfey. 1996. "Wages, Profits, and Rent-Sharing," *Quarterly Journal of Economics* 111: 227-251.
- Blanchflower, D. G., A. Oswald, and M. Garrett. 1990. "Insider Power and Wage Determination," *Economica* 57: 363-370.
- Chipman, J. 1966. "A Survey of the Theory of International Trade, Part III: The Modern Theory," *Econometrica*, 34: 18-76.
- Findlay, R. and H. Grubert. 1959. "Factor Intensities, Technological Progress, and the Terms of Trade." *Oxford Economic Papers*, 11: 111-121.
- Jones, R. W. (1965). "The Structure of Simple General Equilibrium Models," *Journal of Political Economy*, 73: 557-572.
- Jones, R. W. (1971a). "A Three-Factor Model in Theory, Trade, and History," in J. N. Bhagwati, et. al., eds, *Trade, Balance of Payments, and Growth: Essays in Honor of Charles P. Kindleberger*, North-Holland: Amsterdam.
- Jones, R. W. 1971b. "Distortions in Factor Markets and the General Equilibrium Model of Production." *Journal of Political Economy*, 79: 437-459.

- Jones, R. W. and R. J. Ruffin. 1975. "Trade Patterns with Capital Mobility." In M. Parkin and A. Nobay (eds.). *Current Economic Problems*, Cambridge: 307-332.
- Juhn, C., K. Murphy, and B. Pierce. (1993). "Wage Inequality and the Rise in Returns to Skill." *Journal of Political Economy*.101: 410-442.
- Magee, S. P. 1980. "Three Simple Tests of the Stolper-Samuelson Theorem," in: P. Oppenheimer, ed. *Issues in International Economics*, Oriel Press, Stocksfield, London: 138-151.
- Mussa, M. (1974). "Tariffs and The Distribution of Income: The Importance of Factor Specificity, Substitutability, and Intensity in the Short and Long Run." *Journal of Political Economy*, 82: 1191-1204.
- Neary, J. P. (1978). "Dynamic Stability and the Theory of Factor-Market Distortions," *American Economic Review*, 68: 671-682.
- Rosen, S. (1978). "Substitution and the Division of Labour", *Economica*, 45: 235-250.
- Ruffin, R. and R. W. Jones (1977). "Protection and Real Wages: The Neoclassical Ambiguity," *Journal of Economic Theory*, 14: 337-348.
- Ruffin, R. (1988). "The Missing Link: The Ricardian Approach to the Factor Endowment Theory of Trade," *American Economic Review*, 78: 759-772.
- Samuelson, P. 1971. "Ohlin Was Right," *Swedish Journal of Economics*, 73: 365-384.

Samuelson, P. 1953. "The Prices of Goods and Factors in General Equilibrium." *Review of Economic Studies*, 21: 1-20.

Figure 1: Production-Possibilities



From A to B, type 1 labor also in industry 2; from B to C, each type of labor specialized in comparative advantage; and from C to D, type 2 labor also in industry 1.

Figure 2: Relative Wages and Real Wages:  
Good 1 Capital-Intensive

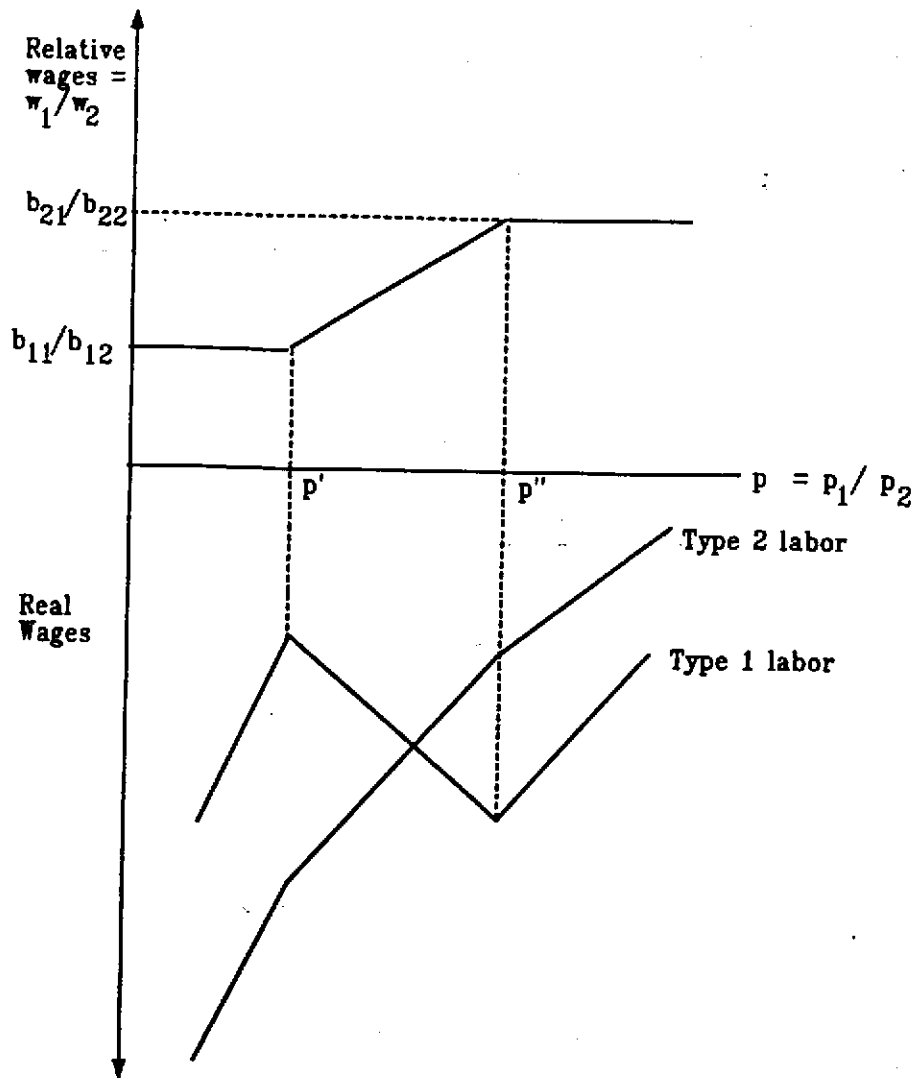
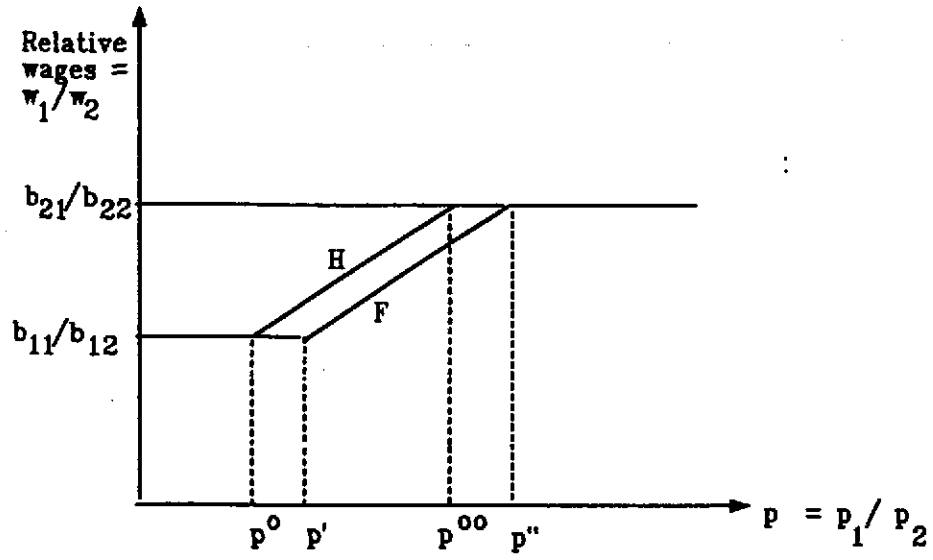


Figure 3: Home Country Well-Endowed with Capital or Type-2 Labor





RESEARCH PAPERS OF THE RESEARCH DEPARTMENT  
FEDERAL RESERVE BANK OF DALLAS

Available, at no charge, from the Research Department  
Federal Reserve Bank of Dallas, P. O. Box 655906  
Dallas, Texas 75265-5906

Please check the titles of the Research Papers you would like to receive:

- 9201 Are Deep Recessions Followed by Strong Recoveries? (Mark A. Wynne and Nathan S. Balke)
- 9202 The Case of the "Missing M2" (John V. Duca)
- 9203 Immigrant Links to the Home Country: Implications for Trade, Welfare and Factor Rewards (David M. Gould)
- 9204 Does Aggregate Output Have a Unit Root? (Mark A. Wynne)
- 9205 Inflation and Its Variability: A Note (Kenneth M. Emery)
- 9206 Budget Constrained Frontier Measures of Fiscal Equality and Efficiency in Schooling (Shawna Grosskopf, Kathy Hayes, Lori L. Taylor, William Weber)
- 9207 The Effects of Credit Availability, Nonbank Competition, and Tax Reform on Bank Consumer Lending (John V. Duca and Bonnie Garrett)
- 9208 On the Future Erosion of the North American Free Trade Agreement (William C. Gruben)
- 9209 Threshold Cointegration (Nathan S. Balke and Thomas B. Fomby)
- 9210 Cointegration and Tests of a Classical Model of Inflation in Argentina, Bolivia, Brazil, Mexico, and Peru (Raul Anibal Feliz and John H. Welch)
- 9211 Nominal Feedback Rules for Monetary Policy: Some Comments (Evan F. Koenig)
- 9212 The Analysis of Fiscal Policy in Neoclassical Models<sup>1</sup> (Mark Wynne)
- 9213 Measuring the Value of School Quality (Lori Taylor)
- 9214 Forecasting Turning Points: Is a Two-State Characterization of the Business Cycle Appropriate? (Kenneth M. Emery & Evan F. Koenig)
- 9215 Energy Security: A Comparison of Protectionist Policies (Mine K. Yücel and Carol Dahl)
- 9216 An Analysis of the Impact of Two Fiscal Policies on the Behavior of a Dynamic Asset Market (Gregory W. Huffman)
- 9301 Human Capital Externalities, Trade, and Economic Growth (David Gould and Roy J. Ruffin)
- 9302 The New Face of Latin America: Financial Flows, Markets, and Institutions in the 1990s (John Welch)
- 9303 A General Two Sector Model of Endogenous Growth with Human and Physical Capital (Eric Bond, Ping Wang, and Chong K. Yip)
- 9304 The Political Economy of School Reform (S. Grosskopf, K. Hayes, L. Taylor, and W. Weber)
- 9305 Money, Output, and Income Velocity (Theodore Palivos and Ping Wang)
- 9306 Constructing an Alternative Measure of Changes in Reserve Requirement Ratios (Joseph H. Haslag and Scott E. Hein)
- 9307 Money Demand and Relative Prices During Episodes of Hyperinflation (Ellis W. Tallman and Ping Wang)
- 9308 On Quantity Theory Restrictions and the Signalling Value of the Money Multiplier (Joseph Haslag)
- 9309 The Algebra of Price Stability (Nathan S. Balke and Kenneth M. Emery)
- 9310 Does It Matter How Monetary Policy is Implemented? (Joseph H. Haslag and Scott Hein)
- 9311 Real Effects of Money and Welfare Costs of Inflation in an Endogenously Growing Economy with Transactions Costs (Ping Wang and Chong K. Yip)
- 9312 Borrowing Constraints, Household Debt, and Racial Discrimination in Loan Markets (John V. Duca and Stuart Rosenthal)
- 9313 Default Risk, Dollarization, and Currency Substitution in Mexico (William Gruben and John Welch)
- 9314 Technological Unemployment (W. Michael Cox)
- 9315 Output, Inflation, and Stabilization in a Small Open Economy: Evidence from Mexico (John H. Rogers and Ping Wang)
- 9316 Price Stabilization, Output Stabilization and Coordinated Monetary Policy Actions (Joseph H. Haslag)
- 9317 An Alternative Neo-Classical Growth Model with Closed-Form Decision Rules (Gregory W. Huffman)
- 9318 Why the Composite Index of Leading Indicators Doesn't Lead (Evan F. Koenig and Kenneth M. Emery)
- 9319 Allocative Inefficiency and Local Government: Evidence Rejecting the Tiebout Hypothesis (Lori L. Taylor)
- 9320 The Output Effects of Government Consumption: A Note (Mark A. Wynne)
- 9321 Should Bond Funds be Included in M2? (John V. Duca)

- \_\_\_ 9322 Recessions and Recoveries in Real Business Cycle Models: Do Real Business Cycle Models Generate Cyclical Behavior? (Mark A. Wynne)
- \_\_\_ 9323\* Retaliation, Liberalization, and Trade Wars: The Political Economy of Nonstrategic Trade Policy (David M. Gould and Graeme L. Woodbridge)
- \_\_\_ 9324 A General Two-Sector Model of Endogenous Growth with Human and Physical Capital: Balanced Growth and Transitional Dynamics (Eric W. Bond, Ping Wang, and Chong K. Yip)
- \_\_\_ 9325 Growth and Equity with Endogenous Human Capital: Taiwan's Economic Miracle Revisited (Maw-Lin Lee, Ben-Chieh Liu, and Ping Wang)
- \_\_\_ 9326 Clearinghouse Banks and Banknote Over-issue (Scott Freeman)
- \_\_\_ 9327 Coal, Natural Gas and Oil Markets after World War II: What's Old, What's New? (Mine K. Yücel and Shengyi Guo)
- \_\_\_ 9328 On the Optimality of Interest-Bearing Reserves in Economies of Overlapping Generations (Scott Freeman and Joseph Haslag)
- \_\_\_ 9329\* Retaliation, Liberalization, and Trade Wars: The Political Economy of Nonstrategic Trade Policy (David M. Gould and Graeme L. Woodbridge) (Reprint of 9323 in error)
- \_\_\_ 9330 On the Existence of Nonoptimal Equilibria in Dynamic Stochastic Economies (Jeremy Greenwood and Gregory W. Huffman)
- \_\_\_ 9331 The Credibility and Performance of Unilateral Target Zones: A Comparison of the Mexican and Chilean Cases (Raul A. Feliz and John H. Welch)
- \_\_\_ 9332 Endogenous Growth and International Trade (Roy J. Ruffin)
- \_\_\_ 9333 Wealth Effects, Heterogeneity and Dynamic Fiscal Policy (Zsolt Becsi)
- \_\_\_ 9334 The Inefficiency of Seigniorage from Required Reserves (Scott Freeman)
- \_\_\_ 9335 Problems of Testing Fiscal Solvency in High Inflation Economies: Evidence from Argentina, Brazil, and Mexico (John H. Welch)
- \_\_\_ 9336 Income Taxes as Reciprocal Tariffs (W. Michael Cox, David M. Gould, and Roy J. Ruffin)
- \_\_\_ 9337 Assessing the Economic Cost of Unilateral Oil Conservation (Stephen P.A. Brown and Hillard G. Huntington)
- \_\_\_ 9338 Exchange Rate Uncertainty and Economic Growth in Latin America (Darryl McLeod and John H. Welch)
- \_\_\_ 9339 Searching for a Stable M2-Demand Equation (Evan F. Koenig)
- \_\_\_ 9340 A Survey of Measurement Biases in Price Indexes (Mark A. Wynne and Fiona Sigalla)
- \_\_\_ 9341 Are Net Discount Rates Stationary?: Some Further Evidence (Joseph H. Haslag, Michael Nieswiadomy, and D. J. Slottje)
- \_\_\_ 9342 On the Fluctuations Induced by Majority Voting (Gregory W. Huffman)
- \_\_\_ 9401 Adding Bond Funds to M2 in the P-Star Model of Inflation (Zsolt Becsi and John Duca)
- \_\_\_ 9402 Capacity Utilization and the Evolution of Manufacturing Output: A Closer Look at the "Bounce-Back Effect" (Evan F. Koenig)
- \_\_\_ 9403 The Disappearing January Blip and Other State Employment Mysteries (Frank Berger and Keith R. Phillips)
- \_\_\_ 9404 Energy Policy: Does it Achieve its Intended Goals? (Mine Yücel and Shengyi Guo)
- \_\_\_ 9405 Protecting Social Interest in Free Invention (Stephen P.A. Brown and William C. Gruben)
- \_\_\_ 9406 The Dynamics of Recoveries (Nathan S. Balke and Mark A. Wynne)
- \_\_\_ 9407 Fiscal Policy in More General Equilibrium (Jim Dolman and Mark Wynne)
- \_\_\_ 9408 On the Political Economy of School Deregulation (Shawna Grosskopf, Kathy Hayes, Lori Taylor, and William Weber)
- \_\_\_ 9409 The Role of Intellectual Property Rights in Economic Growth (David M. Gould and William C. Gruben)
- \_\_\_ 9410 U.S. Banks, Competition, and the Mexican Banking System: How Much Will NAFTA Matter? (William C. Gruben, John H. Welch and Jeffery W. Gunther)
- \_\_\_ 9411 Monetary Base Rules: The Currency Caveat (R. W. Hafer, Joseph H. Haslag, and Scott E. Hein)
- \_\_\_ 9412 The Information Content of the Paper-Bill Spread (Kenneth M. Emery)
- \_\_\_ 9413 The Role of Tax Policy in the Boom/Bust Cycle of the Texas Construction Sector (D'Ann Petersen, Keith Phillips and Mine Yücel)
- \_\_\_ 9414 The P\* Model of Inflation, Revisited (Evan F. Koenig)
- \_\_\_ 9415 The Effects of Monetary Policy in a Model with Reserve Requirements (Joseph H. Haslag)
- \_\_\_ 9501 An Equilibrium Analysis of Central Bank Independence and Inflation (Gregory W. Huffman)
- \_\_\_ 9502 Inflation and Intermediation in a Model with Endogenous Growth (Joseph H. Haslag)
- \_\_\_ 9503 Country-Bashing Tariffs: Do Bilateral Trade Deficits Matter? (W. Michael Cox and Roy J. Ruffin)
- \_\_\_ 9504 Building a Regional Forecasting Model Utilizing Long-Term Relationships and Short-Term Indicators (Keith R. Phillips and Chih-Ping Chang)

- 9505 Building Trade Barriers and Knocking Them Down: The Political Economy of Unilateral Trade Liberalizations (David M. Gould and Graeme L. Woodbridge)
- 9506 On Competition and School Efficiency (Shawna Grosskopf, Kathy Hayes, Lori L. Taylor and William L. Weber)
- 9507 Alternative Methods of Corporate Control in Commercial Banks (Stephen Prowse)
- 9508 The Role of Intratemporal Adjustment Costs in a Multi-Sector Economy (Gregory W. Huffman and Mark A. Wynne)
- 9509 Are Deep Recessions Followed By Strong Recoveries? Results for the G-7 Countries (Nathan S. Balke and Mark A. Wynne)
- 9510 Oil Prices and Inflation (Stephen P.A. Brown, David B. Oppedahl and Mine K. Yücel)
- 9511 A Comparison of Alternative Monetary Environments (Joseph H. Haslag)
- 9512 Regulatory Changes and Housing Coefficients (John V. Duca)
- 9513 The Interest Sensitivity of GDP and Accurate Reg Q Measures (John V. Duca)
- 9514 Credit Availability, Bank Consumer Lending, and Consumer Durables (John V. Duca and Bonnie Garrett)
- 9515 Monetary Policy, Banking, and Growth (Joseph H. Haslag)
- 9516 The Stock Market and Monetary Policy: The Role of Macroeconomic States (Chih-Ping Chang and Huan Zhang)
- 9517 Hyperinflations and Moral Hazard in the Appropriation of Seigniorage: An Empirical Implementation With A Calibration Approach (Carlos E. Zarazaga)
- 9518 Targeting Nominal Income: A Closer Look (Evan F. Koenig)
- 9519 Credit and Economic Activity: Shocks or Propagation Mechanism? (Nathan S. Balke and Chih-Ping Chang)
- 9601 The Monetary Policy Effects on Seignorage Revenue in a Simple Growth Model (Joseph H. Haslag)
- 9602 Regional Productivity and Efficiency in the U.S.: Effects of Business Cycles and Public Capital (Dale Boisso, Shawna Grosskopf and Kathy Hayes)
- 9603 Inflation, Unemployment, and Duration (John V. Duca)
- 9604 The Response of Local Governments to Reagan-Bush Fiscal Federalism (D. Boisso, Shawna Grosskopf and Kathy Hayes)
- 9605 Endogenous Tax Determination and the Distribution of Wealth (Gregory W. Huffman)
- 9606 An Exploration into the Effects of Dynamic Economic Stabilization (Jim Dolmas and Gregory W. Huffman)
- 9607 Is Airline Price Dispersion the Result of Careful Planning or Competitive Forces? (Kathy J. Hayes and Leola B. Ross)
- 9608 Some Implications of Increased Cooperation in World Oil Conservation (Stephen P.A. Brown and Hillard G. Huntington)
- 9609 An Equilibrium Analysis of Relative Price Changes and Aggregate Inflation (Nathan S. Balke and Mark A. Wynne)
- 9610 What's Good for GM...? Using Auto Industry Stock Returns to Forecast Business Cycles and Test the Q-Theory of Investment (Gregory R. Duffee and Stephen Prowse)
- 9611 Does the Choice of Nominal Anchor Matter? (David M. Gould)
- 9612 The Policy Sensitivity of Industries and Regions (Lori L. Taylor and Mine K. Yücel)
- 9613 Oil Prices and Aggregate Economic Activity: A Study of Eight OECD Countries (Stephen P.A. Brown, David B. Oppedahl and Mine K. Yücel)
- 9614 The Effect of the Minimum Wage on Hours of Work (Madeline Zavodny)
- 9615 Aggregate Price Adjustment: The Fischerian Alternative (Evan F. Koenig)
- 9701 Nonlinear Dynamics and Covered Interest Rate Parity (Nathan S. Balke and Mark E. Wohar)
- 9702 More on Optimal Denominations for Coins and Currency (Mark A. Wynne)
- 9703 Specialization and the Effects of Transactions Costs on Equilibrium Exchange (James Dolmas and Joseph H. Haslag)
- 9704 The Political Economy of Endogenous Taxation and Redistribution (Jim Dolmas and Gregory W. Huffman)
- 9705 Inequality, Inflation, and Central Bank Independence (Jim Dolmas, Gregory W. Huffman, and Mark A. Wynne)
- 9706 On The Political Economy of Immigration (Jim Dolmas and Gregory W. Huffman)
- 9707 Business Cycles Under Monetary Union: EU and US Business Cycles Compared (Mark A. Wynne and Jahyeong Koo)
- 9708 Allocative Inefficiency and School Competition (Shawna Grosskopf, Kathy Hayes, Lori L. Taylor and William L. Weber)

- 9709 Goods-Market Competition and Profit Sharing: A Multisector Macro Approach (John V. Duca and David D. VanHoose)
- 9710 Real-Time GDP Growth Forecasts (Evan F. Koenig and Sheila Dolmas)
- 9711 Quasi-Specific Factors: Worker Comparative Advantage in the Two-Sector Production Model (Roy J. Ruffin)

<b>Name:</b>	<b>Organization:</b>
<b>Address:</b>	<b>City, State and Zip Code:</b>
<b>Please add me to your mailing list to receive future Research Papers:</b>	
Yes	No

Research Papers Presented at the  
1994 Texas Conference on Monetary Economics  
April 23-24, 1994  
held at the Federal Reserve Bank of Dallas, Dallas, Texas

Available, at no charge, from the Research Department  
Federal Reserve Bank of Dallas, P. O. Box 655906  
Dallas, Texas 75265-5906

Please check the titles of the Research Papers you would like to receive:

- 1 A Sticky-Price Manifesto (Laurence Ball and N. Gregory Mankiw)
- 2 Sequential Markets and the Suboptimality of the Friedman Rule (Stephen D. Williamson)
- 3 Sources of Real Exchange Rate Fluctuations: How Important Are Nominal Shocks? (Richard Clarida and Jordi Gali)
- 4 On Leading Indicators: Getting It Straight (Mark A. Thoma and Jo Anna Gray)
- 5 The Effects of Monetary Policy Shocks: Evidence From the Flow of Funds (Lawrence J. Christiano, Martin Eichenbaum and Charles Evans)

Name:	Organization:
Address:	City, State and Zip Code:
Please add me to your mailing list to receive future Research Papers:	Yes      No

